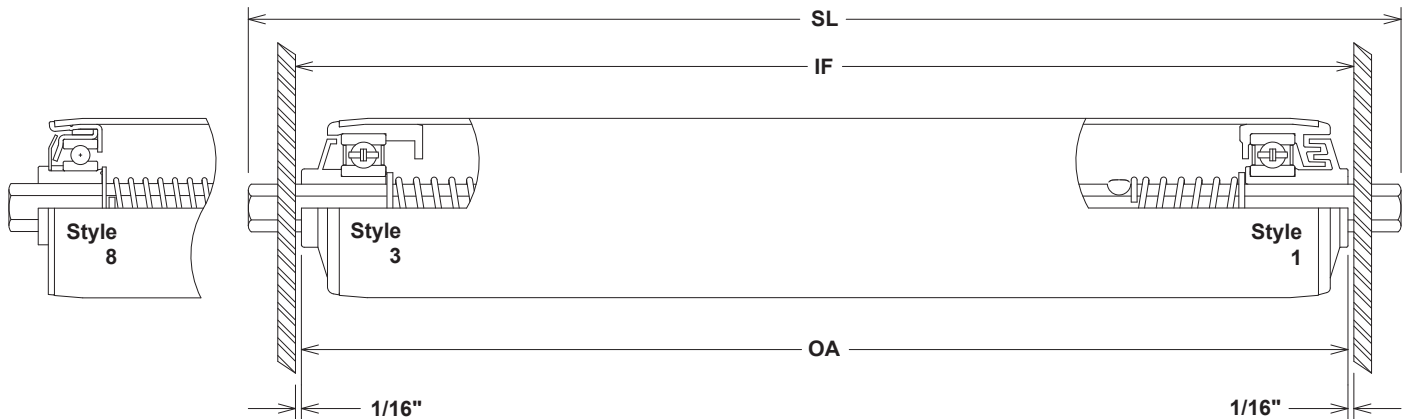


Metal Rollers

2.50" Dia. x .083" Wall Thickness - 7/16" Hex Shaft



Bearings:	Type:	Part #	Style / Description:
	ABEC-1 Precision	3B8	1 / Conductive plastic - Double labyrinth seal construction
	ABEC-1 Precision	3W3	3 / Conductive plastic - Single labyrinth seal construction
	Stainless Steel	2E3	1 / Conductive plastic - Double labyrinth seal construction
	Steel, Commercial	2D5	3 / Conductive plastic - Without labyrinth seal construction
	Stamped, Precision	33B8	8 / ABEC-1 precision in a stamped zinc plated steel housing

Tube:	Materials:	Part #	Description:
	Carbon Steel	C57	2.50" x .083" Wall Carbon Steel
	Galvanized Steel	G57	2.50" x .083" Wall Galvanized Steel
	Stainless Steel	S57	2.50" x .083" Wall 304 Stainless Steel

Drive Options: Grooves, Sprockets, One Way Clutch
 Cover Options: Urethane Sleeves, Urethane Tapered Rollers, HDPE
 Finish Options: Polished, Electropolished, Passivated

Shaft:	Materials:	Part #	Description:
	Carbon Steel	C68	7/16" Hex Carbon Steel Shaft
	Stainless Steel	S70	7/16" Hex 304 Stainless Steel Shaft
	Aluminum	A66	7/16" Hex Aluminum Shaft
	** Plastic adapters	C62	7/16" Hex External Adapter with 5/16" Hex Internal Carbon Steel Shaft
	*** Urethane adapters	UC62	7/16" Hex External Adapter with 5/16" Hex Internal Carbon Steel Shaft
	** Plastic adapters	S62	7/16" Hex External Adapter with 5/16" Hex Internal 304 Stainless Steel Shaft
	*** Urethane adapters	US62	7/16" Hex External Adapter with 5/16" Hex Internal 304 Stainless Steel Shaft

** Max load 50 lbs per roller *** Max load 100 lbs per roller
 Standard Extensions: 1/2" - 5/8" with adapters, 9/16" all others
 Standard Springs: Dual spring loaded with shaft depressing to bearing hub
 Options: Fixed shaft, through shaft, holes, drilled and tapped, zinc plated

Load Capacity (LBS.)

Frame I.F.	Bearing #					Frame I.F.	Bearing #				
	2E3	2D5	3K3	3W3/3B8	33B8		2E3	2D5	3K3	3W3/3B8	33B8
12	174	174	297	368	600	33	137	137	95	125	398
15	174	174	228	289	600	36	125	125	87	115	364
18	174	174	185	237	600	39	115	115	80	106	336
21	174	174	156	201	600	42	107	107	74	98	311
24	174	174	134	175	551	45	99	99	69	91	290
27	169	169	118	155	488	48	93	93	64	85	272
30	151	151	105	139	439	51	87	87	60	80	256

* Load capacity with aluminum tube or shaft is 33% of steel capacity.

** Longer lengths are available upon request.

*** Capacities are for uniform loading - Reduce 50% for point loading.