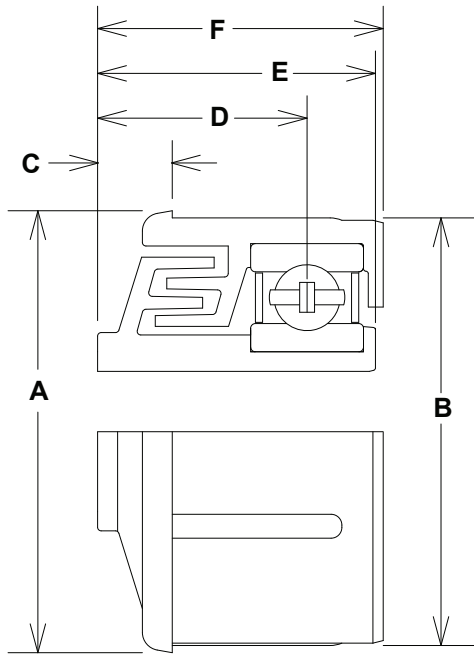
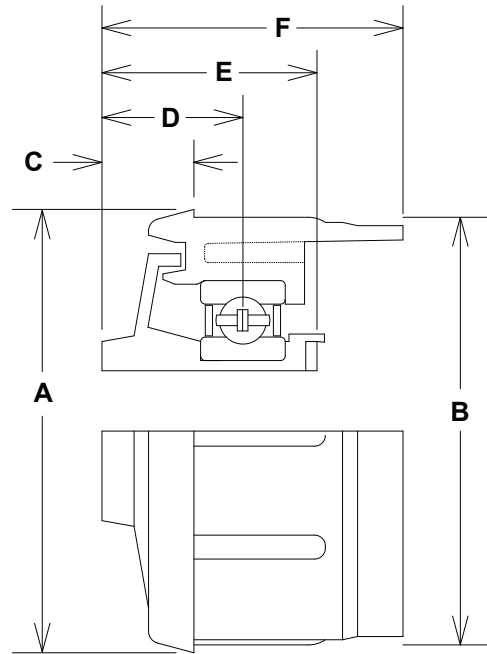


ABEC-1 Precision / Plastic Housing with Labyrinth Seals



2 LABYRINTH SEALS



1 LABYRINTH SEAL

• SEE PAGE 14 FOR RECOMMENDED INSTALLATION & TUBE PREPARATION INFORMATION •

Bearing #	A Dim	B Dim	C Dim	D Dim	E Dim	F Dim	Bore*	Standard Bearing **	# of lab seals	Bearing BDLR
3M8	1.36	1.28	0.22	0.54	0.80	0.81	7/16 HEX	6902	1	906
3M3	1.36	1.28	0.22	0.56	0.80	0.97	5/16 HEX	R8	2	1010
3A8	1.49	1.38	0.25	0.59	0.90	0.98	7/16 HEX	6002	2	1260
3H0	1.61	1.50	0.25	0.59	0.90	1.08	7/16 HEX	6002	2	1260
3A9	1.64	1.53	0.25	0.59	0.90	1.13	7/16 HEX	6002	2	1260
3D6	1.73	1.62	0.25	0.59	0.90	1.13	7/16 HEX	6002	2	1260
3W8	1.86	1.75	0.39	0.59	0.90	1.26	7/16 HEX	6002	1	1260
3A1	1.87	1.68	0.25	0.59	0.90	1.13	7/16 HEX	6002	2	1260
3RP	1.87	1.77	0.38	0.59	0.88	0.95	7/16 HEX	6002	1	1260
3H5	1.87	1.77	0.25	0.59	0.90	1.13	7/16 HEX	6002	2	1260
3A6	1.87	1.77	0.31	0.86	1.16	1.19	7/16 HEX	6203	2	2150
3A0	1.87	1.77	0.31	0.86	1.22	1.23	5/16 HEX	6203	2	2150
3W6	1.98	1.87	0.39	0.59	0.90	1.26	7/16 HEX	6002	1	1260
3E0	1.97	1.87	0.31	0.86	1.16	1.19	7/16 HEX	6203	2	2150
3W10	2.07	1.87	0.39	0.59	0.90	1.26	7/16 HEX	6002	1	1260
3K3	2.48	2.33	0.25	0.59	0.90	1.13	7/16 HEX	6002	2	1260
3B8	2.45	2.33	0.31	0.86	1.16	1.20	7/16 HEX	6203	2	2150
3J7	2.45	2.26	0.31	0.93	1.38	1.38	5/8 HEX	6205	2	3150
3B9	2.45	2.26	0.31	0.93	1.38	1.38	11/16 HEX	6205	2	3150
3K4	2.98	2.76	0.31	0.93	1.38	1.38	11/16 HEX	6205	2	3150
3E6	3.45	3.33	0.31	0.93	1.38	1.38	11/16 HEX	6205	2	3150
3D4	3.45	3.26	0.31	0.93	1.38	1.38	11/16 HEX	6205	2	3150

* Other bore configurations available upon request - inquire with customer service

** Other bearing seal/shield configurations available upon request - inquire with customer service

*** Bearing dimensions and configurations subject to change without notification