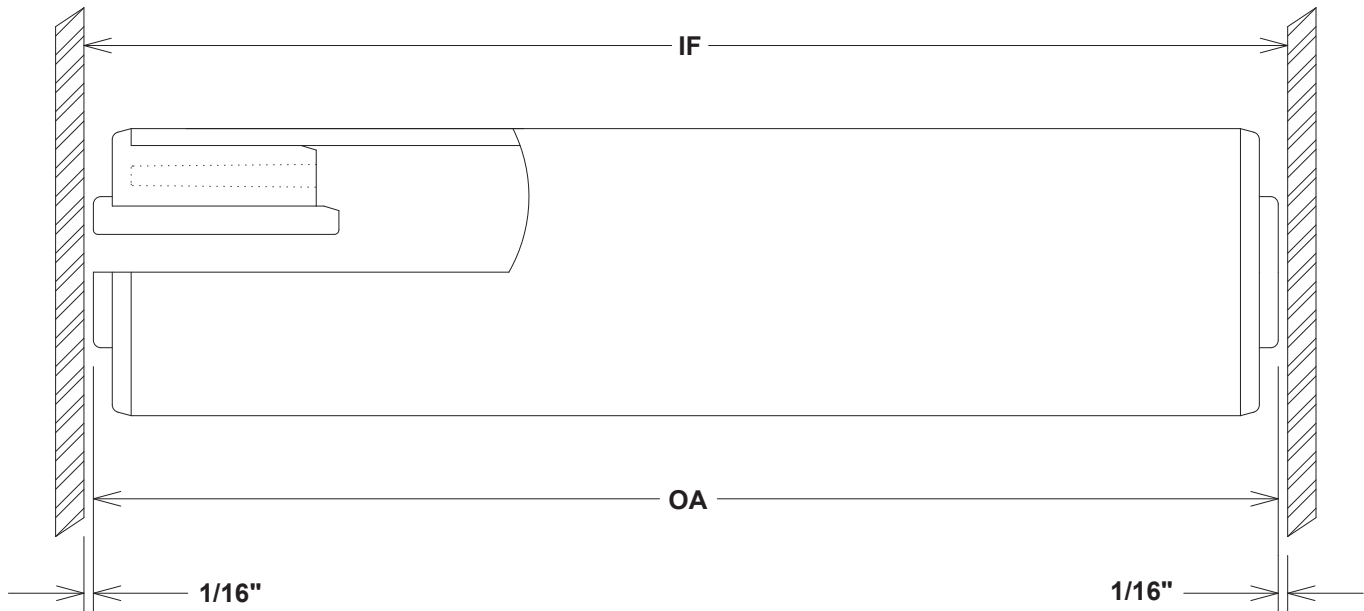


Through Hole Idler Rollers (THI) - Heavy Duty Bushings



Tubes:

| Tube No. | Tube O.D. | Wall Thickness |
|-----------|-----------|----------------|
| W00 | 0.840 | 0.107 |
| W10 | 1.050 | 0.113 |
| W20 | 1.310 | 0.133 |
| W30 | 1.660 | 0.140 |
| H41 | 1.900 | 0.112 |
| H45 / D45 | 1.900 | 0.200 |
| H51 | 2.375 | 0.125 |
| W55 | 2.375 | 0.218 |
| H61 | 2.875 | 0.150 |
| W65 | 2.875 | 0.276 |
| D75 | 3.500 | 0.300 |
| D85 | 4.500 | 0.337 |

Bushings:

| Heavy Duty |
|------------|
| 1/4 5T* |
| 5/16 5T* |
| 3/8 5T |
| 7/16 5T |
| 1/2 5T |
| 9/16 5T |
| 5/8 5T |
| 3/4 5T |

5 = Heavy duty bushing - 1 1/2" long
 T = Through hole style bushing

Tube Materials:

W = White PVC
 H = "Hi-Impact" White PVC
 D = Dark Gray PVC

Bushing Materials: FDA Approved

Molded Acetal unless otherwise specified

Options:

Molded "Ultra Blue" Acetal with Teflon additives
 * UHMW only (upon request)

Ordering example:

Roller O.D. and wall thickness from tube chart _____ **41 - 1/2 5T - THI X 24" OA**
 Bushing size, type and duty from bushing chart _____
 Roller Style _____
 Length of Roller _____

O.A. = length of roller from outside to outside of plastic bushing
 I.F. = Inside frame dimension (will allow 1/8" endplay when roller is installed)
 * Note: Minimum I.F. should be O.A. + 1/8"