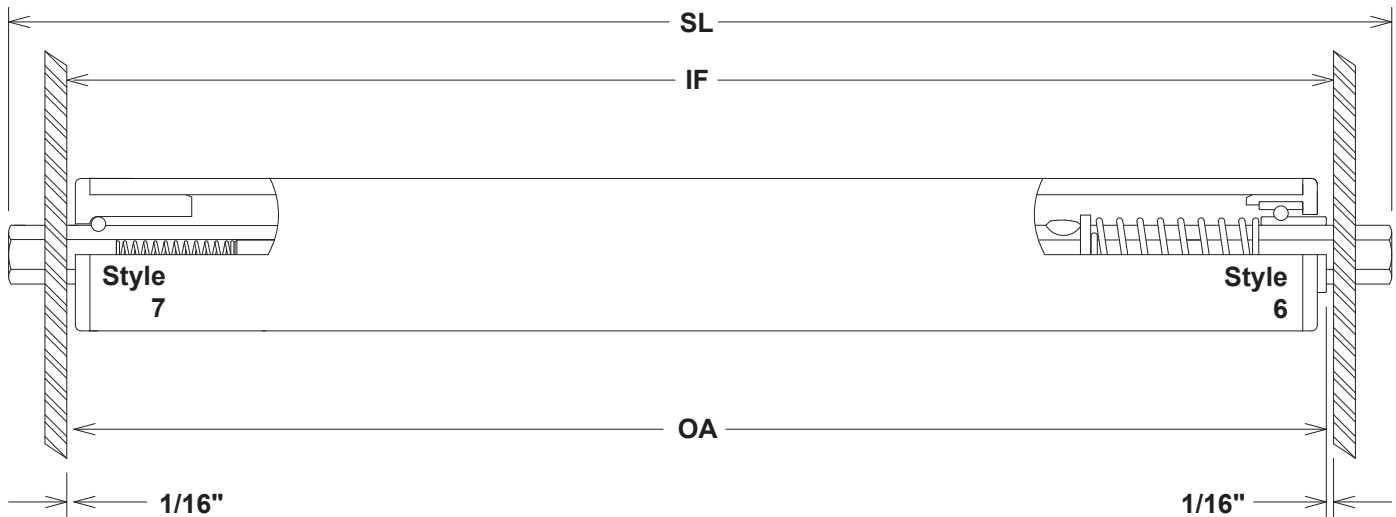


# Plastic Rollers

## 1.31" Dia. x .133" Wall Thickness - 7/16" Hex Shaft



<b>Bearings:</b>	<b>Type:</b> Stainless steel Steel, commercial Stainless steel	<b>Part #</b> 1L6 2L5 2J6	<b>Style / Description:</b> 7 / Stainless steel balls in a plastic housing and raceway 6 / Plastic housing - No seals 6 / Plastic housing - No seals
<b>Tube:</b>	<b>Materials:</b> PVC	<b>Part #</b> W20	<b>Description:</b> 1.31" x .133 Wall White PVC
<b>Shaft:</b>	<b>Materials:</b> Carbon steel Stainless steel Aluminum Acetal adapters  Acetal adapters	<b>Part #</b> C68 S70 A66 C07  S07	<b>Description:</b> 7/16" Hex Carbon Steel Shaft 7/16" Hex 304 Stainless Steel Shaft 7/16" Hex Aluminum Shaft 7/16" Hex External Adapter with 1/4" Round Internal Carbon Steel Shaft 7/16" Hex External Adapter with 1/4" Round Internal 304 Stainless Steel Shaft
	Standard Extensions:	7/16" with C07 and S07, 9/16" with all others	
	Standard Springs:	Dual spring loaded with shaft depressing to bearing hub	
	Options:	Fixed shaft, through shaft, holes, rings or pins, drilled and tapped, threaded	

**Note:** 1L6 style bearings are for intermittent use only.  
Not recommended for powered systems.

### Load Capacity (LBS.)

Frame I.F.	Bearing #			Frame I.F.	Bearing #		
	1L6	2L5	2J6		1L6	2L5	2J6
12	10	37	37	33	***	***	***
15	10	23	23	36	***	***	***
18	10	16	16	39	***	***	***
21	10	11	11	42	***	***	***
24	9	9	9	45	***	***	***
27	7	7	7	48	***	***	***
30	***	***	***	51	***	***	***

\* Load capacity with aluminum shaft is 33% of steel capacity.

\*\* Longer lengths are not recommended exceeding a load capacity of 5 pounds.