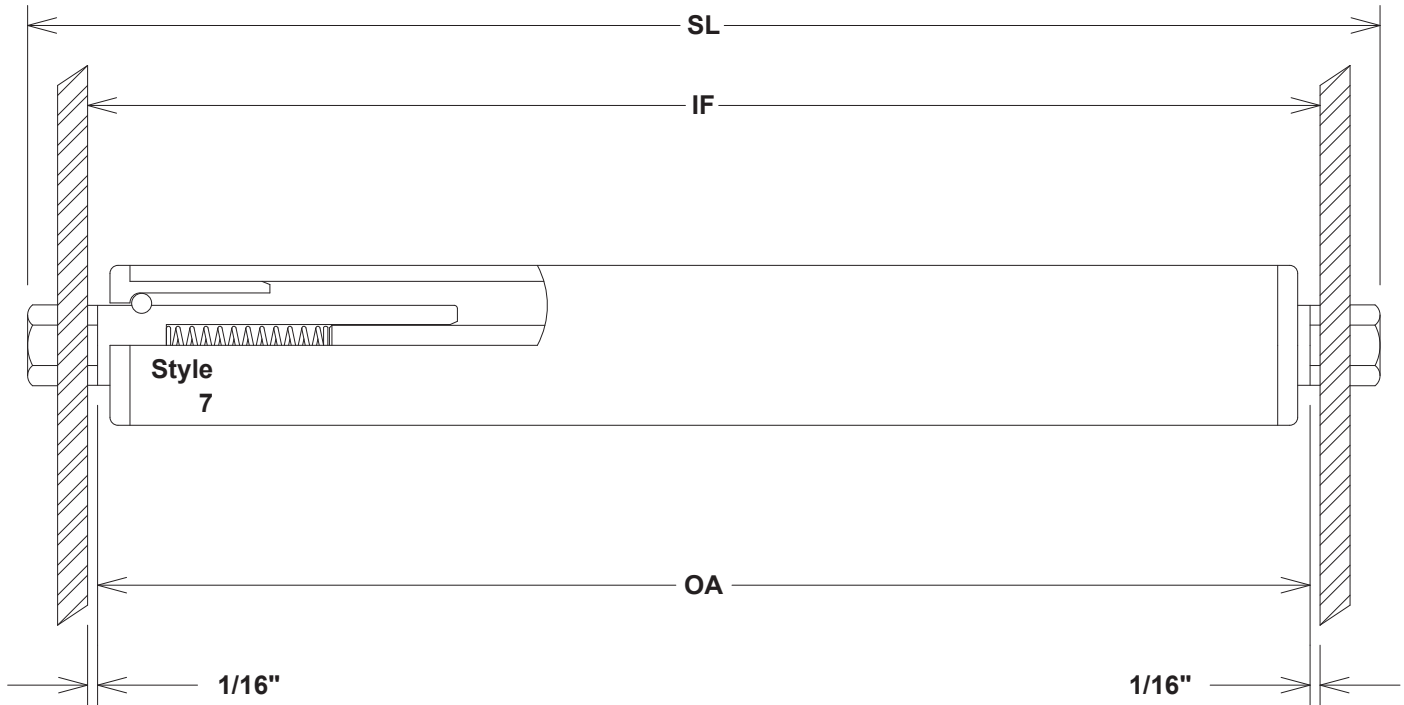


1.05" Dia. x .113" Wall Thickness - 7/16" Hex Shaft Adapter



Bearings:	Type: Stainless Steel	Part # 1K4	Style / Description: 7 / Stainless steel balls in a plastic housing and raceway
Tube:	Materials: PVC	Part # W10	Description: 1.05" x .113" Wall White PVC
Shaft:	Materials: Acetal Adapters	Part # C07	Description: 7/16" Hex External Adapter with 1/4 Round Internal Carbon Steel Shaft
	Acetal Adapters	S07	7/16" Hex External Adapter with 1/4" Round Internal 304 Stainless Steel Shaft
	Standard Extensions:	7/16"	
	Standard Springs:	Dual spring loaded with shaft depressing to bearing hub	

Note: 1K4 style bearings are for intermittent use only.
Not recommended for powered systems.

Load Capacity (LBS.)

Frame I.F.	Bearing # 1K4	Frame I.F.	Bearing # 1K4
12	10	33	***
15	10	36	***
18	9	39	***
21	7	42	***
24	5	45	***
27	***	48	***
30	***	51	***

* Longer lengths are not recommended exceeding a load capacity of 5 pounds.