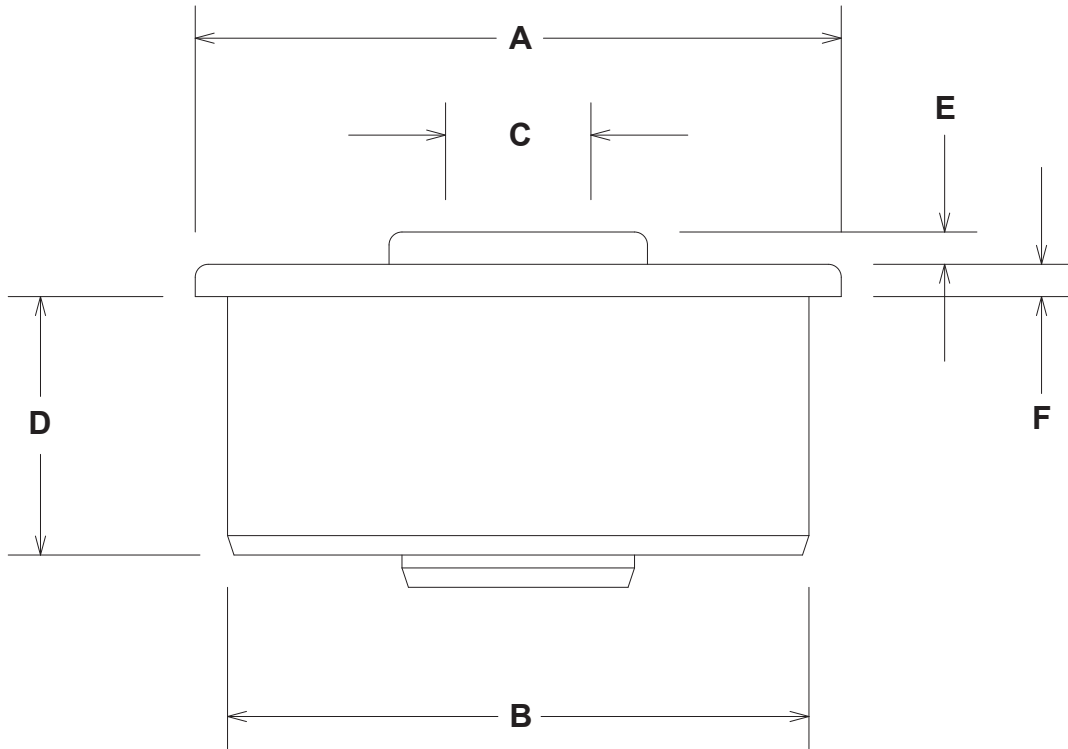


Custom Endplug



**Note: Must indicate blind hole or through hole style bushing**

- A = \_\_\_\_\_ Flange Diameter
- B = \_\_\_\_\_ Body Diameter
- C = \_\_\_\_\_ Bore Diameter
- D = \_\_\_\_\_ Body Length
- E = \_\_\_\_\_ Hub Thickness (1/8" Standard)
- F = \_\_\_\_\_ Flange Thickness (1/8" Standard)

**Bushing Style: Blind Hole / Through Hole (circle one)**

**Note: Commercial Plastic Tubing May Require Boring For Proper Fit and Concentricity.**

**Company:** \_\_\_\_\_

**Contact:** \_\_\_\_\_

**Phone:** \_\_\_\_\_

**Fax:** \_\_\_\_\_

**Signature:** \_\_\_\_\_ **Date:** \_\_\_\_\_