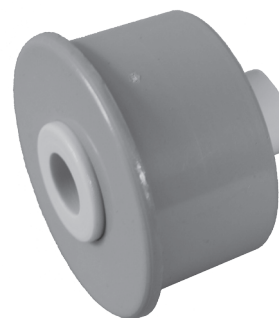


Components for Plastic Tubes

*** Commercial plastic tubing may require boring for proper fit and concentricity ***

Standard Duty Endplugs

Part No.	Flange O.D.	Body O.D.	Pipe Size
20	1.315	1.049	1" SCH 40
40	1.900	1.605	1 1/2" SCH 40
41	1.900	1.675	RPCO Tube #41



2 Piece Endplug / Bushing combination for press fit or glue into plastic tube

Standard Duty Bushings

Thru Hole: 1/4-T, 3/8-T, 1/2-T, 5/16-T, 7/16-T
 Blind Hole: 3/8-B, 1/2-B
 Endplug Material: Gray ABS
 Bushing Material: Standard: Light blue Acetal
 * UHMW - Upon Request
 Length: Standard: 7/8"
 Combined Flange Thickness: 1/4"
 Other sizes available upon request

Heavy Duty Endplugs

Part No.	Flange O.D.	Body O.D.	Pipe Size
405	1.900	1.605	1 1/2" SCH 40
415	1.900	1.675	RPCO Tube #41
455	1.900	1.500	1 1/2" SCH 80
505	2.375	2.058	2" SCH 40
515	2.375	2.125	RPCO Tube #51
555	2.375	1.930	2" SCH 80
605	2.875	2.470	2 1/2" SCH 40
615	2.875	2.565	RPCO Tube #61
655	2.875	2.320	2 1/2" SCH 80
705	3.500	3.068	3" SCH 40
755	3.500	2.900	3" SCH 80
805	4.500	4.026	4" SCH 40
855	4.500	3.821	4" SCH 80



2 Piece Endplug / Bushing combination for press fit or glue into plastic tube

Heavy Duty Bushings

Thru Hole: 1/4-5T*, 5/16-5T*, 3/8-5T, 7/16-5T, 1/2-5T, 9/16-5T, 5/8-5T, 3/4-5T
 Blind Hole: 1/4-5B*, 5/16-5B*, 3/8-5B, 7/16-5B, 1/2-5B, 9/16-5B, 5/8-5B, 3/4-5B
 Endplug Material: Gray ABS
 Bushing Material: Standard: Light Blue Acetal Optional: Molded "Ultra Blue" Acetal with Teflon additive
 * UHMW - Upon request
 * UHMW only
 Length: Standard: 1 1/2"
 Combined Flange Thickness: 1/4"
 Other sizes available upon request

PVC Tubing – Idler

Part No.	O.D. x Wall	Length	Lbs. Per Lineal Ft.
41-12	1.900 x .112	12	0.400
45-12	1.900 x .200	12	0.664
51-12	2.375 x .125	12	0.558
55-14	2.375 x .218	14	0.918
61-12	2.875 x .150	12	0.806
65-12	2.875 x .276	12	1.400
75-10	3.500 x .300	10	1.877

**For Custom Endplugs
go to the Engineering
Drawings Section -
CUSTOM ENDPLUG**