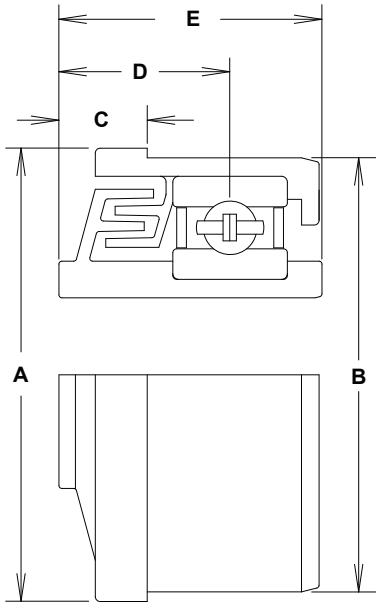
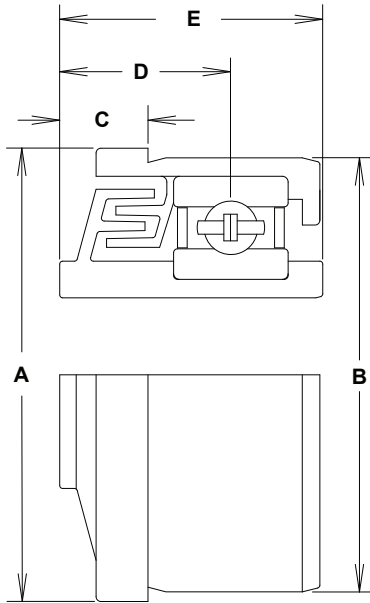


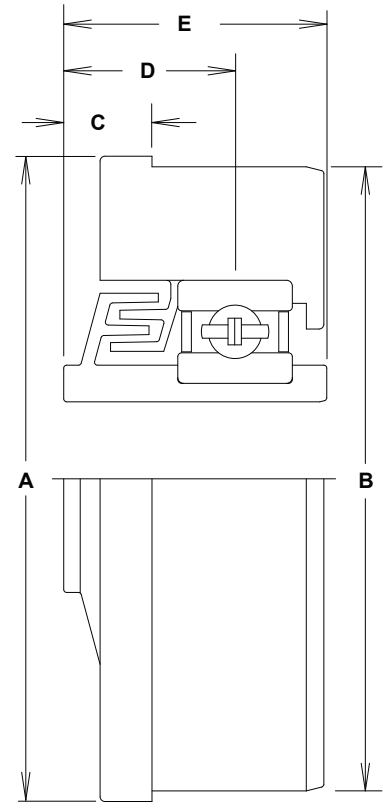
ABEC-1 Precision / Machined Metal Housings



34B9



35B9



34D4

• SEE PAGE 14 FOR RECOMMENDED INSTALLATION & TUBE PREPARATION INFORMATION •

| Bearing # | A Dim | B Dim | C Dim | D Dim | E Dim | Bore * | Bearing | Bearing BDLR |
|-----------|-------|-------|-------|-------|-------|-----------|----------|--------------|
| 34B9 | 2.36 | 2.26 | 0.46 | 0.89 | 1.37 | 11/16 hex | 6205 LLB | 3150 |
| 35B9 | 2.36 | 2.26 | 0.46 | 0.89 | 1.37 | 11/16 hex | 6205 LLB | 3150 |
| 34D4 | 3.36 | 3.25 | 0.46 | 0.89 | 1.37 | 11/16 hex | 6205 LLB | 3150 |

* Bearing dimensions and configurations subject to change without notification LLB = Non-contact rubber seals

- Also available in 20MM round, 3/4" round and 5/8" hex bores. Inquire with customer service.
- Machined metal housings are typically welded into metal tubes.
- The ABEC-1 bearings are covered with a conductive plastic double labyrinth seal system.
- Ideal for heavy duty snubber and belt wrap areas in conveyor systems.