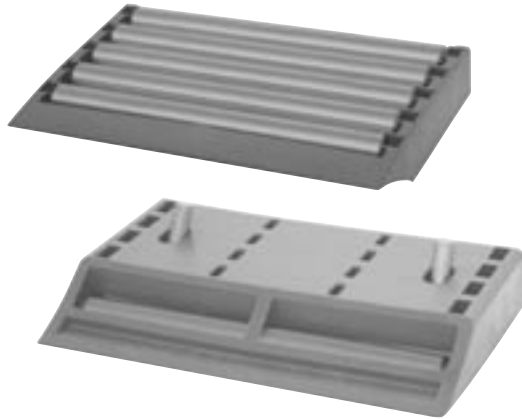


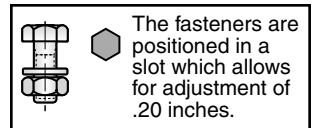
## Modular Transfer Plates with Plastic Rollers



- Ultra low friction
- Low noise rollers
- Clean design
- Back-to-back and end-to-end modularity
- Rollers with ball bearing
- Quick and easy assembly
- Mounting hardware included

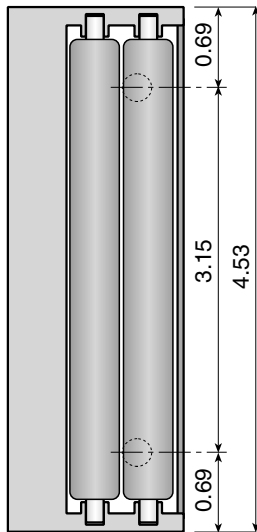
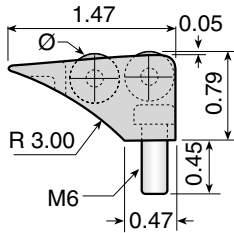
Perfect for use with Flexon 4-1/2" Flat Top Chains!

Chain Guides and Wear Strips



### 16778-SSA

**Modular Transfer Plates**  
2 roller rows with sloped entry.  
Available in 4.53 inch widths.

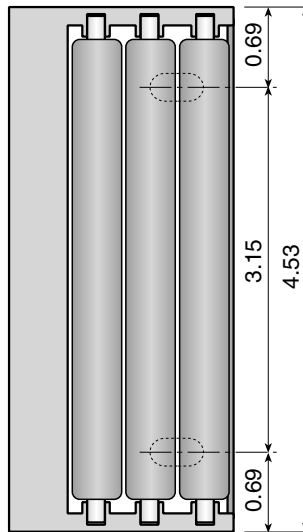
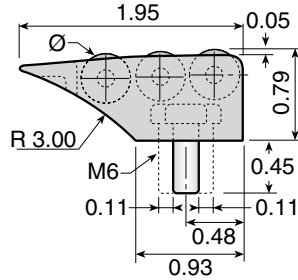


**Material:** XP acetal frame and rollers.  
Stainless steel pins, washers and bolts.

Part Number	Ø Roller	Length (in.)
16778-SSA	0.43	4.53

### 16771-SSA

**Modular Transfer Plates**  
3 roller rows with sloped entry.  
Available in 4.53 inch widths.

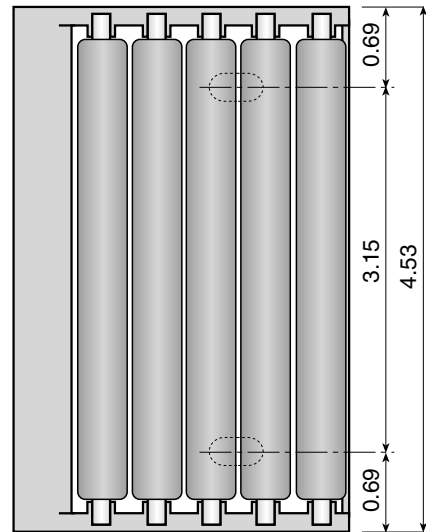
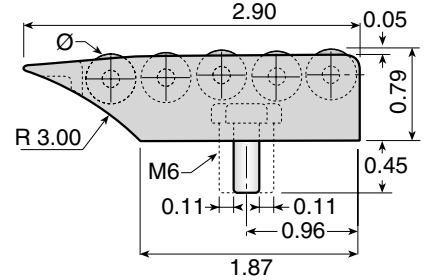


**Material:** XP acetal frame and rollers.  
Stainless steel pins, washers and bolts.

Part Number	Ø Roller	Length (in.)
16771-SSA	0.43	4.53

### 16773-SSA

**Modular Transfer Plates**  
5 roller rows with sloped entry.  
Available in 4.53 inch widths.



**Material:** XP acetal frame and rollers.  
Stainless steel pins, washers and bolts.

Part Number	Ø Roller	Length (in.)
16773-SSA	0.43	4.53