

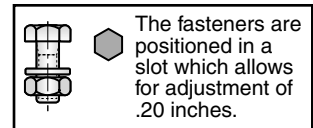
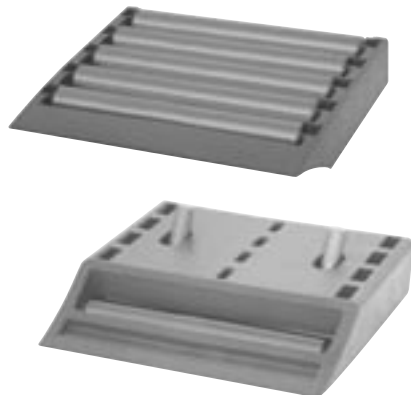


# Modular Transfer Plates with Ball Bearing Rollers

## Modular Transfer Plates with Plastic Rollers

Perfect for use with Flexon 3-1/4" Flat Top Chains!

- Ultra low friction
- Low noise rollers
- Clean design
- Back-to-back and end-to-end modularity
- Rollers with ball bearing
- Quick and easy assembly
- Mounting hardware included

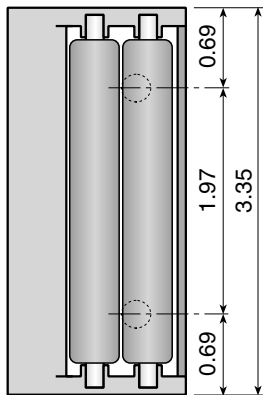
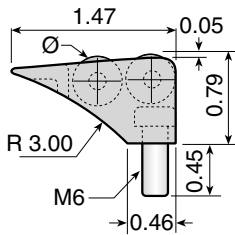


Chain Guides and Wear Strips

### 16777-SSA

#### Modular Transfer Plates

2 roller rows with sloped entry.  
Available in 3.35 inch widths.



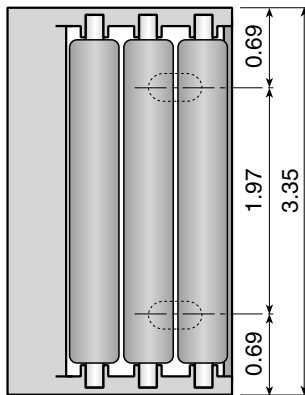
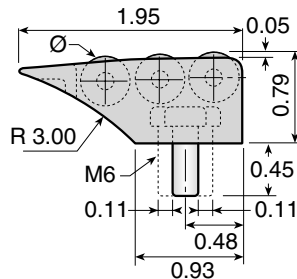
**Material:** XP acetal frame and rollers.  
Stainless steel pins, washers and bolts.

Part Number	Ø Roller	Length (in.)
16777-SSA	0.43	3.35

### 16770-SSA

#### Modular Transfer Plates

3 roller rows with sloped entry.  
Available in 3.35 inch widths.



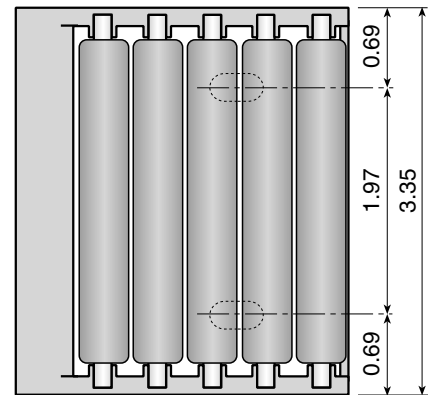
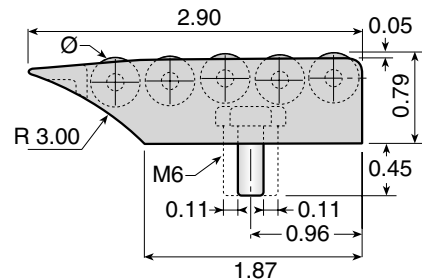
**Material:** XP acetal frame and rollers.  
Stainless steel pins, washers and bolts.

Part Number	Ø Roller	Length (in.)
16770-SSA	0.43	3.35

### 16772-SSA

#### Modular Transfer Plates

5 roller rows with sloped entry.  
Available in 3.35 inch widths.



**Material:** XP acetal frame and rollers.  
Stainless steel pins, washers and bolts.

Part Number	Ø Roller	Length (in.)
16772-SSA	0.43	3.35