

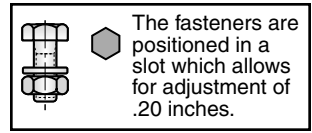
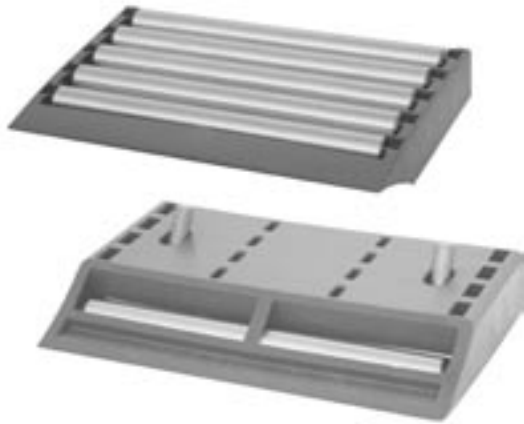


Modular Transfer Plates with Stainless Steel Rollers

- Ultra low friction
- Low noise rollers
- Clean design
- Back-to-back and end-to-end modularity
- Rollers with ball bearing
- Quick and easy assembly
- Mounting hardware included

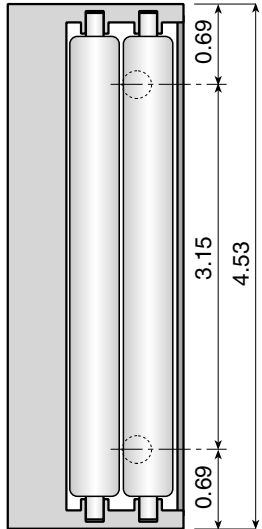
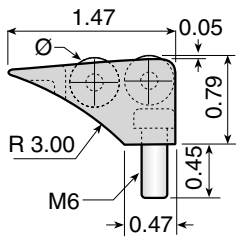
Perfect for use with Flexon 4-1/2" Flat Top Chains!

Chain Guides and Wear Strips



16778-SS

Modular Transfer Plates
2 roller rows with sloped entry.
Available in 4.53 inch widths.

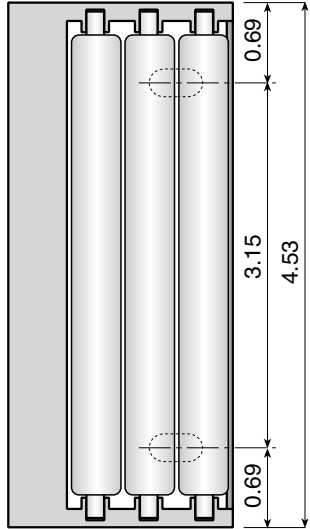
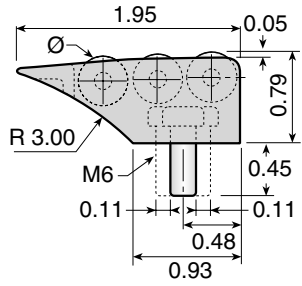


Material: XP acetal frame. Stainless steel rollers, pins, washers and bolts.

Part Number	Ø Roller	Length (in.)
16778-SS	0.43	4.53

16771-SS

Modular Transfer Plates
3 roller rows with sloped entry.
Available in 4.53 inch widths.

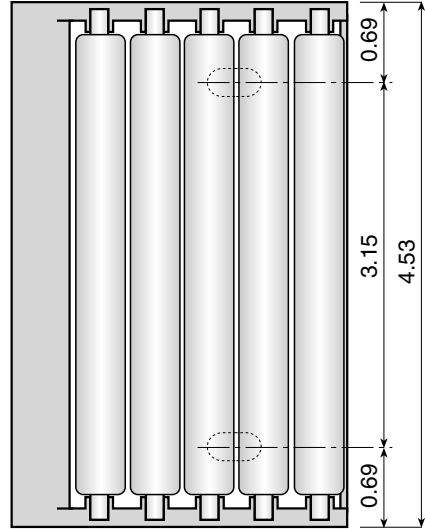
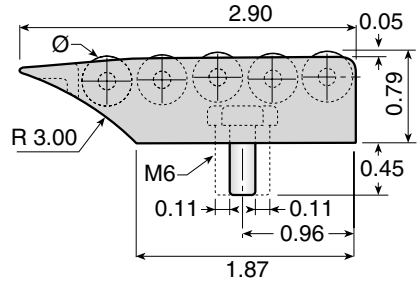


Material: XP acetal frame. Stainless steel rollers, pins, washers and bolts.

Part Number	Ø Roller	Length (in.)
16771-SS	0.43	4.53

16773-SS

Modular Transfer Plates
5 roller rows with sloped entry.
Available in 4.53 inch widths.



Material: XP acetal frame. Stainless steel rollers, pins, washers and bolts.

Part Number	Ø Roller	Length (in.)
16773-SS	0.43	4.53