

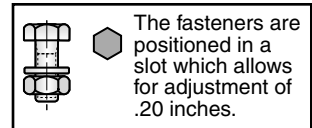
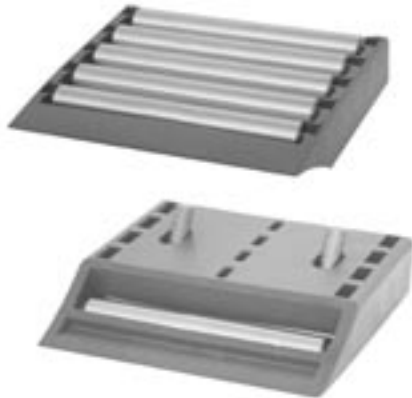


# Modular Transfer Plates with Ball Bearing Rollers

## Modular Transfer Plates with Stainless Steel Rollers

Perfect for use with Flexon 3-1/4" Flat Top Chains!

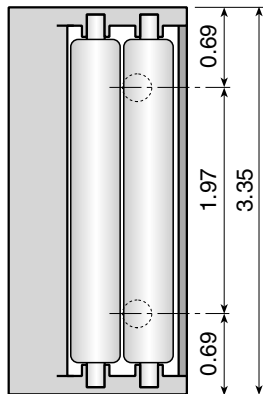
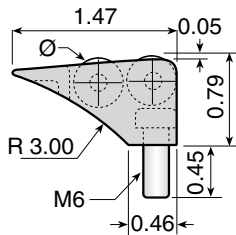
- Ultra low friction
- Low noise rollers
- Clean design
- Back-to-back and end-to-end modularity
- Rollers with ball bearing
- Quick and easy assembly
- Mounting hardware included



Chain Guides and Wear Strips

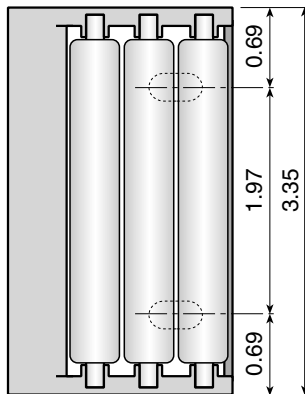
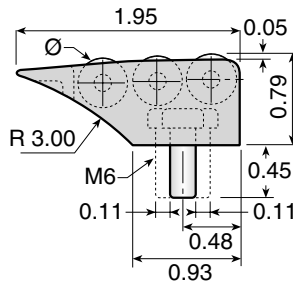
### 16777-SS

**Modular Transfer Plates**  
2 roller rows with sloped entry.  
Available in 3.35 inch widths.



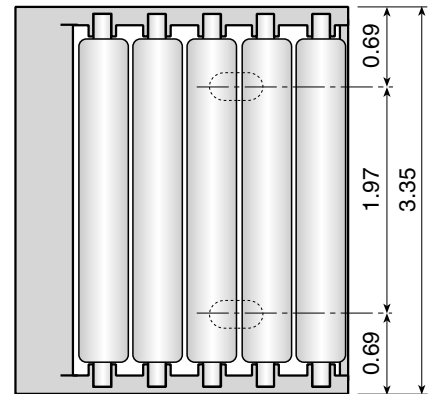
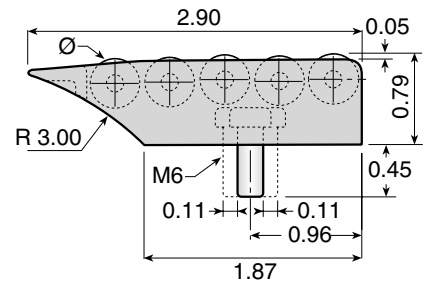
### 16770-SS

**Modular Transfer Plates**  
3 roller rows with sloped entry.  
Available in 3.35 inch widths.



### 16772-SS

**Modular Transfer Plates**  
5 roller rows with sloped entry.  
Available in 3.35 inch widths.



**Material:** XP acetal frame. Stainless steel rollers, pins, washers and bolts.

Part Number	Ø Roller	Length (in.)
16777-SS	0.43	3.35

**Material:** XP acetal frame. Stainless steel rollers, pins, washers and bolts.

Part Number	Ø Roller	Length (in.)
16770-SS	0.43	3.35

**Material:** XP acetal frame. Stainless steel rollers, pins, washers and bolts.

Part Number	Ø Roller	Length (in.)
16772-SS	0.43	3.35