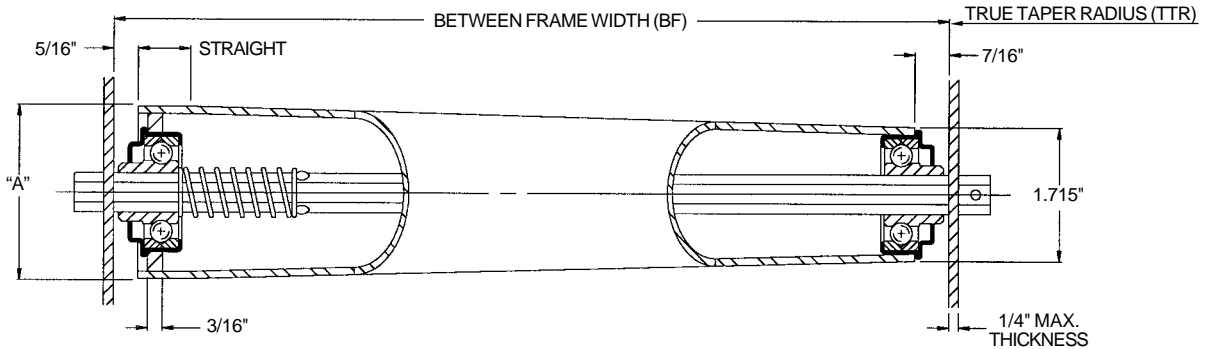


Tapered Roller - .048 Taper/Inch - 7/16 in. Hex Axle



Description:

Tube: 3 1/4 in. O.D. Max. to 1.715 in. O.D. x 14 ga.

Axle: 7/16 in. Hex

Spring No.: 11375

Pin No.: 101010

Weight (lbs.): 0.32 + 0.28 x BF

| Roller No. | Bearing No. | Retained | BF |
|------------|---------------|----------|-----------------|
| 28699 - BF | 102031- Plain | Spring | 8 1/2 - 15 |
| 28700 - BF | 102031- Plain | Pin | 8 1/2 - 15 |
| 27536 - BF | 102031- Plain | Spring | 15 1/2 - 32 1/2 |
| 28701 - BF | 102031- Plain | Pin | 15 1/2 - 32 1/2 |
| 14153 - BF | 102031- Plain | Spring | 33 - 39 |
| 25273 - BF | 102031- Plain | Pin | 33 - 39 |

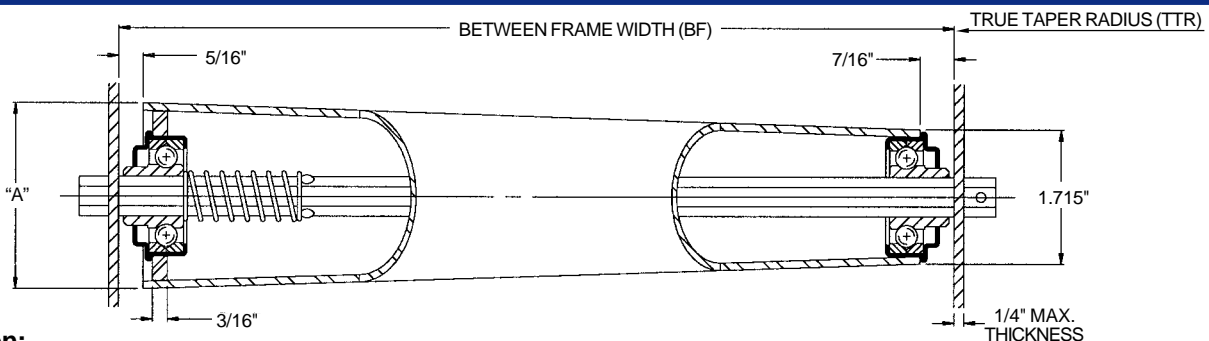
TAPERED ROLLER CAPACITY CHART (LBS.)

| BF** | Roller Capacity | Dimension "A" | TTR | BF** | Roller Capacity | Dimension "A" | TTR |
|------|-----------------|---------------|----------|------|-----------------|---------------|----------|
| 13 | 290 | 2.303" | 36 3/16" | 27 | 290 | 2.975" | 36 3/16" |
| 14 | 290 | 2.351" | | 28 | 288 | 3.023" | |
| 15 | 290 | 2.399" | | 29 | 278 | 3.071" | |
| 16 | 290 | 2.447" | | 30 | 268 | 3.119" | |
| 17 | 290 | 2.495" | | 31 | 259 | 3.167" | |
| 18 | 290 | 2.543" | | 32 | 251 | 3.215" | |
| 19 | 290 | 2.591" | | 33* | 243 | 3.250" | |
| 20 | 290 | 2.639" | | 34* | 235 | 3.250" | |
| 21 | 290 | 2.687" | | 35* | 228 | 3.250" | |
| 22 | 290 | 2.735" | | 36* | 222 | 3.250" | |
| 23 | 290 | 2.783" | | 37* | 216 | 3.250" | |
| 24 | 290 | 2.831" | | 38* | 210 | 3.250" | |
| 25 | 290 | 2.879" | | 39* | 204 | 3.250" | |
| 26 | 290 | 2.927" | | | | | |

* Above 32" BF roller, additional tube length is straight 3 1/4" O.D. tube.

** Other Between Frame Widths available. See chart at left.

Tapered Roller - .0597 Taper/Inch - 7/16 in. Hex Axle



Description:

Tube: 3 1/4 in. O.D. Max. to 1.715 in. O.D. x 14 ga.

Axle: 7/16 in. Hex

Spring No.: 11375

Pin No.: 101010

Weight (lbs.): 0.32 + 0.28 x BF

| Roller No. | Bearing No. | Retained | BF |
|------------|---------------|----------|-----------------|
| 28702 - BF | 102031- Plain | Spring | 7 - 11 |
| 14155 - BF | 102031- Plain | Pin | 7 - 11 |
| 14154 - BF | 102031- Plain | Spring | 11 1/2 - 26 1/2 |
| 28703 - BF | 102031- Plain | Pin | 11 1/2 - 26 1/2 |

TAPERED ROLLER CAPACITY CHART (LBS.)

| BF* | Roller Capacity | Dimension "A" | TTR | BF* | Roller Capacity | Dimension "A" | TTR |
|-----|-----------------|---------------|----------|-----|-----------------|---------------|----------|
| 7 | 290 | 2.088" | 29 3/16" | 17 | 290 | 2.685" | 29 3/16" |
| 8 | 290 | 2.148" | | 18 | 290 | 2.745" | |
| 9 | 290 | 2.208" | | 19 | 290 | 2.805" | |
| 10 | 290 | 2.267" | | 20 | 290 | 2.864" | |
| 11 | 290 | 2.327" | | 21 | 290 | 2.924" | |
| 12 | 290 | 2.387" | | 22 | 290 | 2.984" | |
| 13 | 290 | 2.446" | | 23 | 290 | 3.043" | |
| 14 | 290 | 2.506" | | 24 | 290 | 3.103" | |
| 15 | 290 | 2.566" | | 25 | 290 | 3.163" | |
| 16 | 290 | 2.625" | | 26 | 290 | 3.222" | |

* Other Between Frame Widths available. See chart at left.