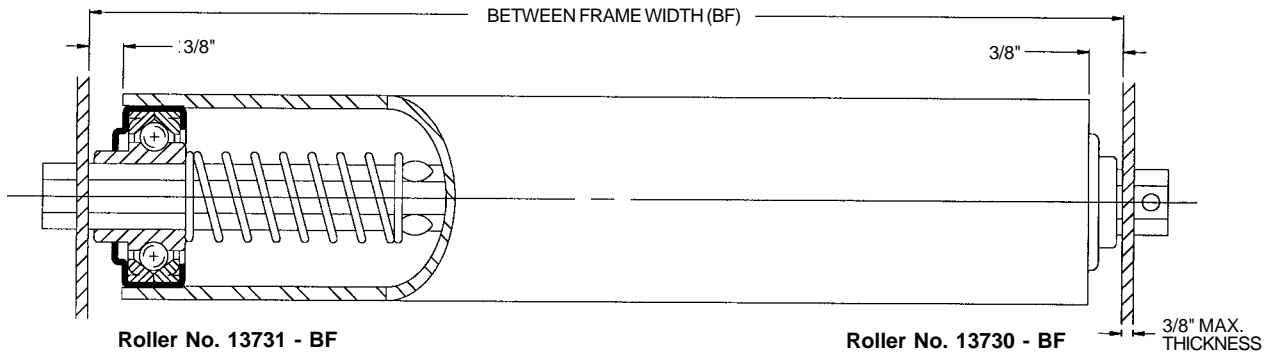


Roller 2 1/4 in. O.D. x 9 ga. - 5/8 in. Hex Axle



Roller No. 13731 - BF

Roller No. 13730 - BF

3/8" MAX. THICKNESS

Description:

Tube: 2 1/4 in. O.D. x 9 ga. (.145 in.)

Axle: 5/8 in. Hex

Spring No.: 11372

Pin No.: 101011

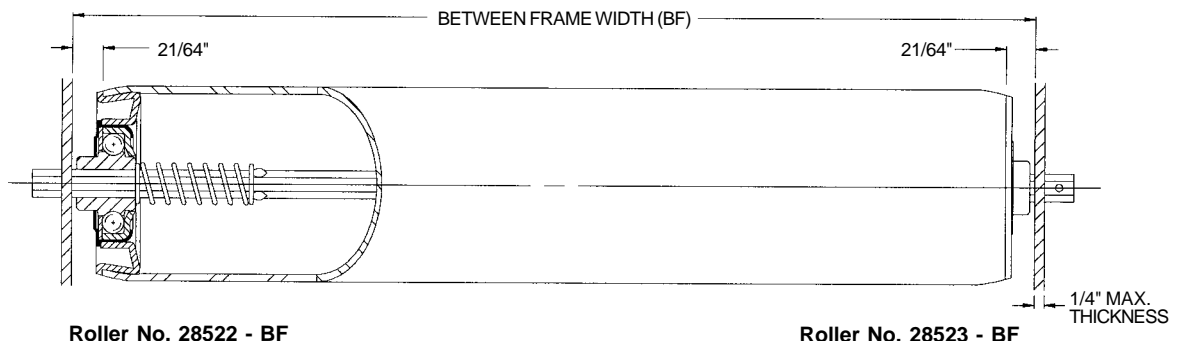
Weight (lbs.): 0.87 + 0.37 x BF

Roller No.	Bearing No.	Retained	BF
13730 - BF	102047 - Plain	Pin	3 - 63
13731 - BF	102047 - Plain	Spring	8 - 63

ROLLER CAPACITY CHART (LBS.)			
BF*	Bearing No. 102047	BF*	Bearing No. 102047
7	450	37	450
10	450	40	450
13	450	43	450
16	450	46	450
19	450	49	450
22	450	52	450
25	450	55	450
28	450	58	450
31	450	61	450
34	450	63	450

* Other Between Frame Widths available. See chart at left.

Roller 2 1/2 in. O.D. x 14 ga. - 5/16 in. Hex Axle



Roller No. 28522 - BF

Roller No. 28523 - BF

1/4" MAX. THICKNESS

Description:

Tube: 2 1/2 in. O.D. x 14 ga. (.083 in.)

Axle: 5/16 in. Hex

Bearing Adapter No.: 102058

Spring No.: 11372

Pin No.: 101136

Weight (lbs.): 0.57 + 0.23 x BF

Roller No.	Bearing No.	Retained	BF
28522 - BF	102145 - Plain	Spring	7 - 39
28523 - BF	102145 - Plain	Pin	4 - 39

ROLLER CAPACITY CHART (LBS.)			
BF*	Bearing No. 102145	BF*	Bearing No. 102145
7	275	25	94
9	275	27	87
11	226	29	80
13	188	31	75
15	161	33	70
17	141	35	66
19	125	37	63
21	113	39	59
23	102		

* Other Between Frame Widths available. See chart at left.