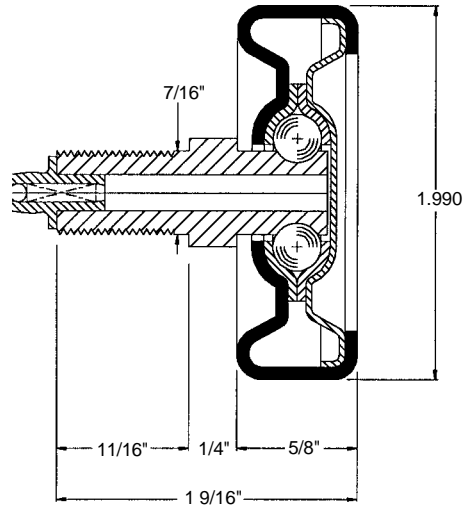


Body Diameter = 1.990 in.

Description:

- Non-precision wheel
- 7/16-20 threaded stud with grease fitting
- 65 lb. per bearing load rating
- Seven 1/4 in. dia. hardened steel balls
- Pressed steel outer shell
- Rubber and neoprene boots available



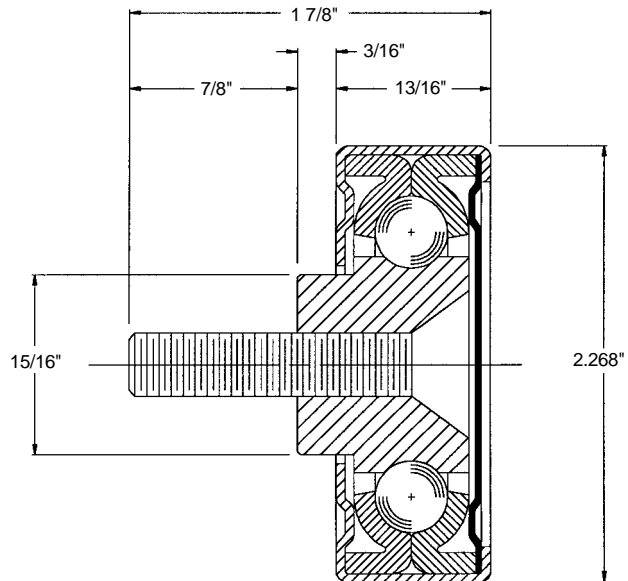
Part No. 102225

(CT-01)

Body Diameter = 2.268 in.

Description:

- Non-precision wheel
- 3/8-16 threaded stud
- 290 lb. per bearing load rating
- Eleven 3/8 in. dia. hardened steel balls
- Pressed steel outer shell



Part No. 102150

(64)