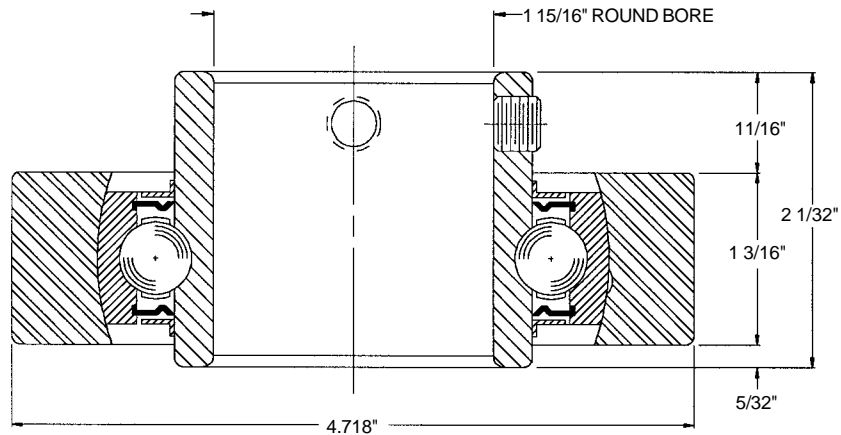


### Description:

- Machined bearing sleeve - Part No. 27968
- Spherical O.D. precision bearing
- 4195 lb. per bearing load rating
- Ten 1/2 in. dia. hardened chrome alloy steel balls
- Ball retainers
- Front and back synthetic rubber seal
- Front and back shield

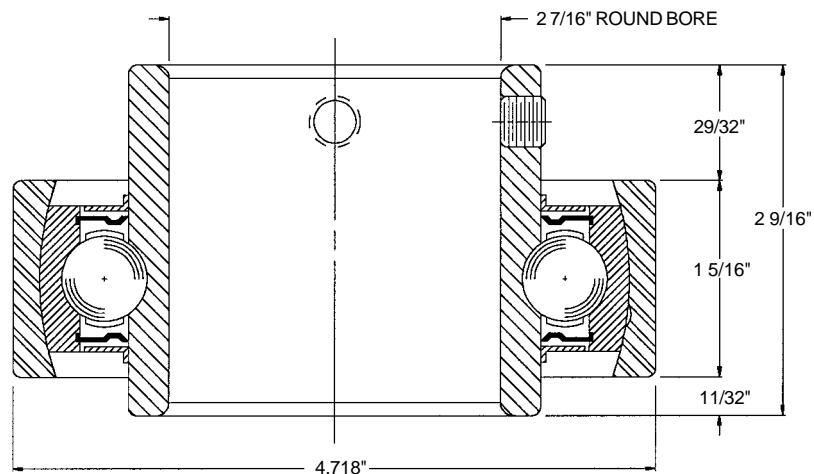


Assembly Part No. 27960 - Bearing No. 102217

(13-012CU)

### Description:

- Machined bearing sleeve - Part No. 27969
- Spherical O.D. precision bearing
- 6275 lb. per bearing load rating
- Ten 5/8 in. dia. hardened chrome alloy steel balls
- Ball retainers
- Front and back synthetic rubber seal
- Front and back shield



Assembly Part No. 27962 - Bearing No. 102218

(93-212CU)