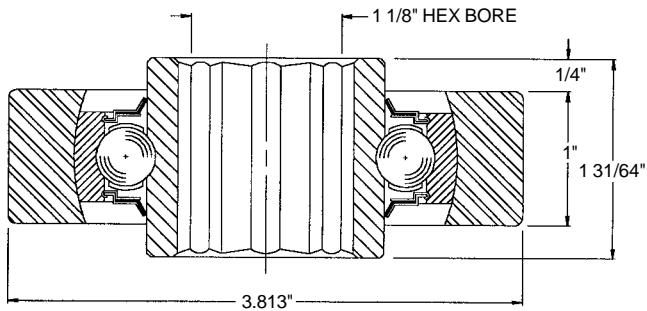


### Description:

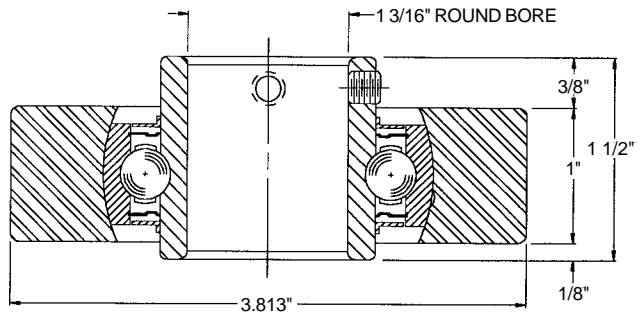
- Machined bearing sleeve - Part No. 27966
- Spherical O.D. precision bearing
- 3086 lb. per bearing load rating
- Nine 7/16 in. dia. hardened chrome alloy steel balls
- Ball retainers
- Front and back synthetic rubber seal
- Front and back shield



Assembly Part No. 27956 - Bearing No. 102220

### Description:

- Machined bearing sleeve - Part No. 27972
- Spherical O.D. precision bearing
- 2323 lb. per bearing load rating
- Nine 3/8 in. dia. hardened chrome alloy steel balls
- Ball retainers
- Front and back synthetic rubber seal
- Front and back shield

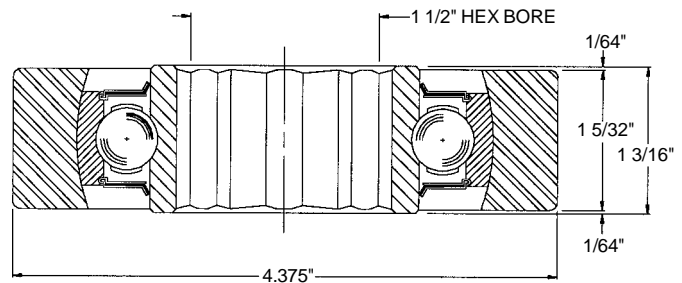


Assembly Part No. 27957 - Bearing No. 102216

(9BRRK702,91-602CU)

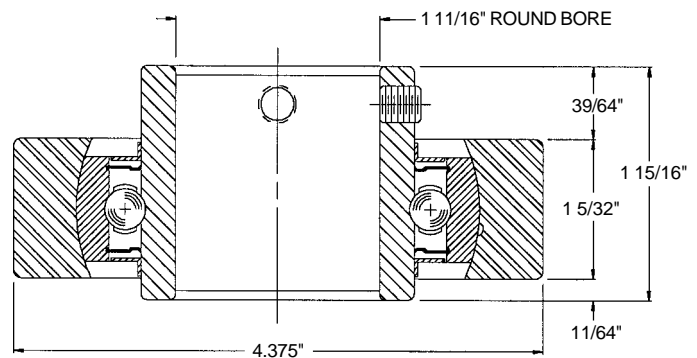
### Description:

- Machined bearing sleeve - Part No. 27967
- Spherical O.D. precision bearing
- 3918 lb. per bearing load rating
- Nine 1/2 in. dia. hardened chrome alloy steel balls
- Ball retainers
- Front and back synthetic rubber seal
- Front and back shield



Assembly Part No. 27958 - Bearing No. 102222

(2BRRK902)



Assembly Part No. 27959 - Bearing No. 102165

(72-902CU)