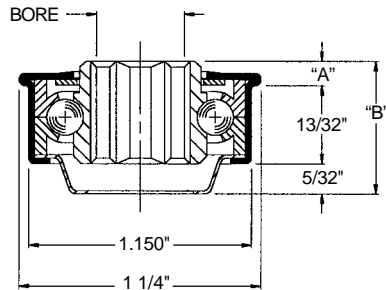
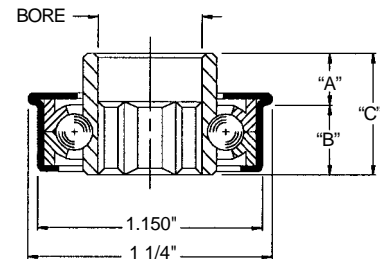


Description:

- Flanged type non-precision bearing
- 75 lb. per bearing load rating
- Thirteen 3/16 in. dia. hardened steel balls
- Pressed steel outer shell



Front Shield and Back Closure



Bearing Number	Bore Size	Dimension "A"	Dimension "B"
102046	5/16" Hex	5/32"	23/32"
102177	7/16" Hex	1/8"	11/16"

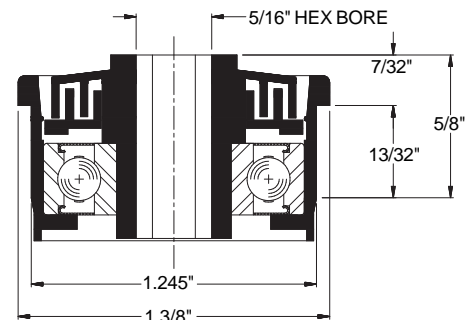
(6511,4511)

Bearing Number	Bore Size	Dimension "A"	Dimension "B"	Dimension "C"
102043	5/16" Hex	7/32"	11/32"	9/16"
102176	3/8" Hex	9/32"	13/32"	11/16"
102126	7/16" Hex	9/32"	11/32"	5/8"

(2511,1511,0511)

Description:

- ABEC-1 rated precision bearing mounted in a polypropylene housing and hex adapter
- 50 lb. bearing assembly capacity
- Standard bearing R8
- Ball retainer
- Front double-labyrinth shielded housing
- Front and back bearing metal shield
- Designed for high speed and low noise applications
- Polypropylene housing is electrically conductive

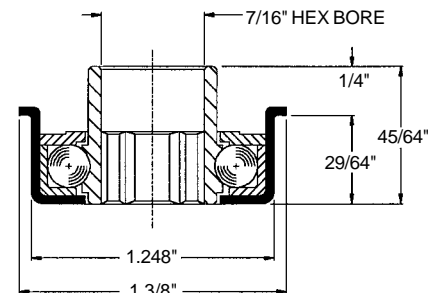


Bearing No. 113499

(1M3)

Description:

- Flanged type non-precision bearing
- 198 lb. per bearing load rating
- Twelve 7/32 in. dia. hardened steel balls
- Pressed steel outer shell



Bearing No. 110528

(H7-0521-CF)