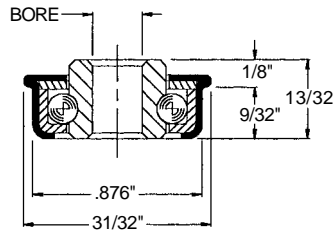


Bearings

Body Diameter = .876 in.

Description:

- Flanged type non-precision bearing
- 40 lb. per bearing load rating
- Ten 5/32 in. dia. hardened steel balls
- Pressed steel outer shell



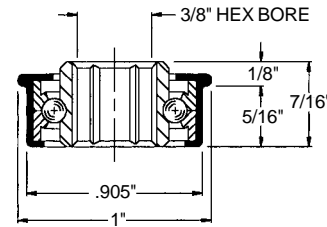
Bearing Number	Bore Size
102168	1/4" Hex
102169	1/4" Round
102170	5/16" Round

(5783, 8783, 9783)

Body Diameter = .905 in.

Description:

- Flanged type non-precision bearing
- 35 lb. per bearing load rating
- Fifteen 1/8 in. dia. hardened steel balls
- Pressed steel outer shell



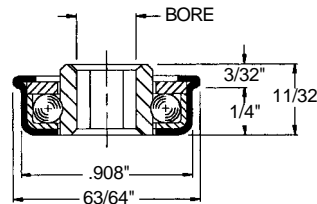
Bearing No. 102171

(5491)

Body Diameter = .908 in.

Description:

- Flanged type non-precision bearing
- 30 lb. per bearing load rating
- Twelve 5/32 in. dia. hardened steel balls
- Pressed steel outer shell



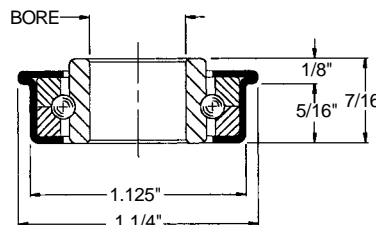
Bearing Number	Bore Size
102245	1/4" Round
102152	5/16" Hex
102272	5/16" Round

(513-809FB, H513-809FB, 352-809FB)

Body Diameter = 1.125 in.

Description:

- Flanged type non-precision bearing
- 40 lb. per bearing load rating
- Eighteen 1/8 in. dia. hardened steel balls
- Pressed steel outer shell



Bearing Number	Bore Size
102172	1/2" Round
102173	3/8" Round

(1945, 8635)