



687FLEX-1.4

NEW

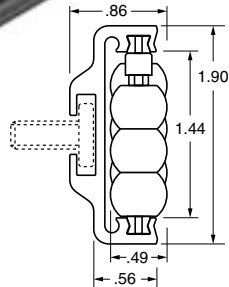
Flexible SpeedRail SB™

Bend by hand to create corners or S-curves easily. Low friction beads provide excellent guides for polywrapped containers or PET bottles. Smaller beads help guide smaller containers. Can be cut to length. Easy mounting using VG-1568-02 bolts (included). Operating temperature range: -10°F to +180°F.



VG-1568-02 included (see page 232)

Patented Feature
Patent No. 6,516,933



Material: PVC channel, FDA accepted engineered polymer pins, gray acetal beads.

Part Number	No. of Bolts Included*	Length (ft.)
VG-687FLEX-1.4-02	3	2
VG-687FLEX-1.4-03	3	3
VG-687FLEX-1.4-04	3	4
VG-687FLEX-1.4-05	4	5
VG-687FLEX-1.4-06	4	6
VG-687FLEX-1.4-07	5	7
VG-687FLEX-1.4-08	5	8
VG-687FLEX-1.4-09	6	9
VG-687FLEX-1.4-10	6	10

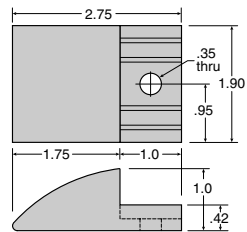
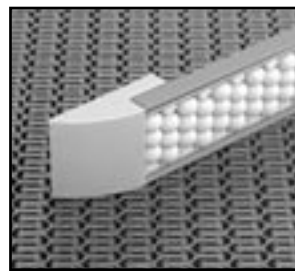
*Bolts included are VG-1568-02

687SP

Side Plow for Flexible SpeedRail SB™

Material: Nolu-S with stainless steel fastener.

Part Number
VG-687SP-1.4

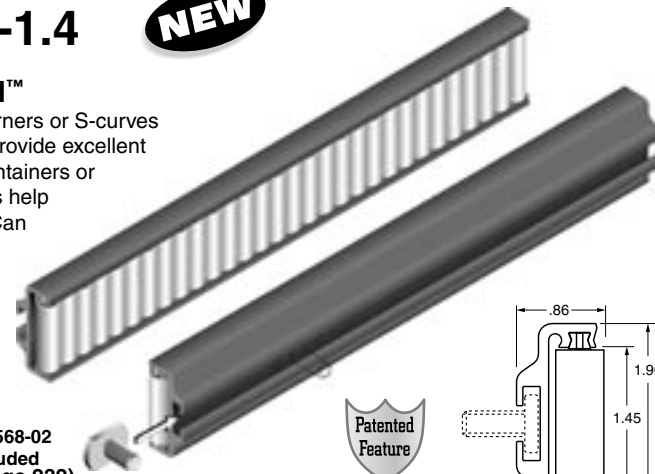


688FLEX-1.4

NEW

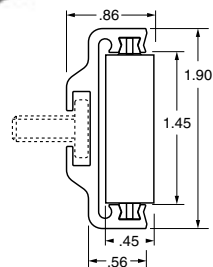
Flexible SpeedRoll™

Bend by hand to create corners or S-curves easily. Low friction beads provide excellent guides for polywrapped containers or PET bottles. Smaller beads help guide smaller containers. Can be cut to length. Easy mounting using VG-1568-02 bolts (included). Operating temperature range: -10°F to +180°F.



VG-1568-02 included (see page 232)

Patented Feature
Patent No. 6,516,933



Material: PVC channel, FDA accepted engineered polymer pins, gray acetal rollers.

Part Number	No. of Bolts Included*	Length (ft.)
VG-688FLEX-1.4-02	3	2
VG-688FLEX-1.4-03	3	3
VG-688FLEX-1.4-04	3	4
VG-688FLEX-1.4-05	4	5
VG-688FLEX-1.4-06	4	6
VG-688FLEX-1.4-07	5	7
VG-688FLEX-1.4-08	5	8
VG-688FLEX-1.4-09	6	9
VG-688FLEX-1.4-10	6	10

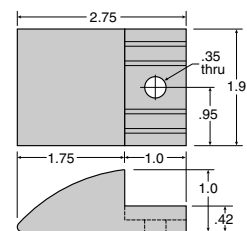
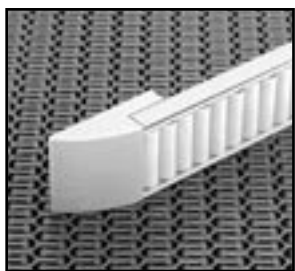
*Bolts included are VG-1568-02

687SP

Side Plow for Flexible SpeedRoll™

Material: Nolu-S with stainless steel fastener.

Part Number
VG-687SP-1.4



Bead and Roller Guides