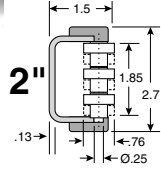
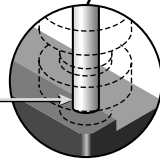


3/8 carriage bolt

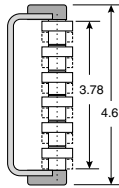
10 ga. steel channel (.130)

1/4 stainless steel pins will support larger loads.

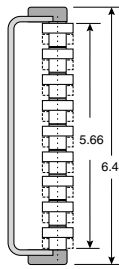


2"

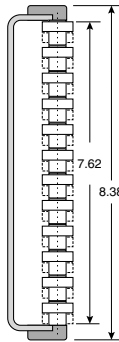
4"



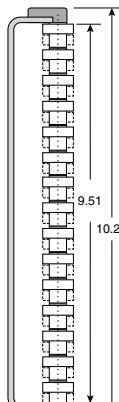
6"



8"



10"



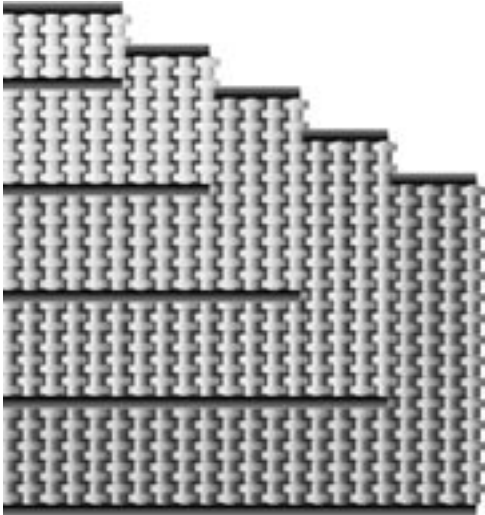
VG-682-SS-2
VG-682-PL-2

VG-682-SS-4
VG-682-PL-4

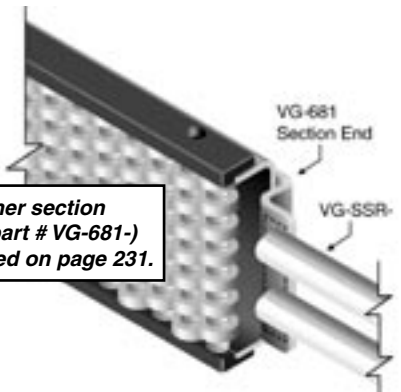
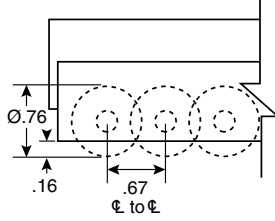
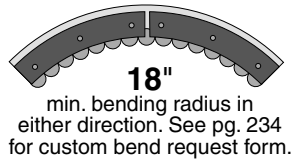
VG-682-SS-6
VG-682-PL-6

VG-682-SS-8
VG-682-PL-8

VG-682-SS-10
VG-682-PL-10



Bead and Roller Guides



Combiner section ends (part # VG-681-) are listed on page 231.

682

Roller Combiner

Low friction guiding surface. Excellent for combiner or accumulation areas.
Operating temperature range: -4°F to +170°F.

Material: 10 ga. steel channel, polyamide pin rails, stainless steel pins, acetal beads.

Stainless Channel	Plated Channel	Length (ft.)	Height (in.)
VG-682-SS-2-2	VG-682-PL-2-2	2	2
VG-682-SS-2-3	VG-682-PL-2-3	3	2
VG-682-SS-2-4	VG-682-PL-2-4	4	2
VG-682-SS-2-5	VG-682-PL-2-5	5	2
VG-682-SS-2-6	VG-682-PL-2-6	6	2
VG-682-SS-2-7	VG-682-PL-2-7	7	2
VG-682-SS-2-8	VG-682-PL-2-8	8	2
VG-682-SS-2-10	VG-682-PL-2-10	10	2
VG-682-SS-4-2	VG-682-PL-4-2	2	4
VG-682-SS-4-3	VG-682-PL-4-3	3	4
VG-682-SS-4-4	VG-682-PL-4-4	4	4
VG-682-SS-4-5	VG-682-PL-4-5	5	4
VG-682-SS-4-6	VG-682-PL-4-6	6	4
VG-682-SS-4-7	VG-682-PL-4-7	7	4
VG-682-SS-4-8	VG-682-PL-4-8	8	4
VG-682-SS-4-10	VG-682-PL-4-10	10	4
VG-682-SS-6-2	VG-682-PL-6-2	2	6
VG-682-SS-6-3	VG-682-PL-6-3	3	6
VG-682-SS-6-4	VG-682-PL-6-4	4	6
VG-682-SS-6-5	VG-682-PL-6-5	5	6
VG-682-SS-6-6	VG-682-PL-6-6	6	6
VG-682-SS-6-7	VG-682-PL-6-7	7	6
VG-682-SS-6-8	VG-682-PL-6-8	8	6
VG-682-SS-6-10	VG-682-PL-6-10	10	6
VG-682-SS-8-2	VG-682-PL-8-2	2	8
VG-682-SS-8-3	VG-682-PL-8-3	3	8
VG-682-SS-8-4	VG-682-PL-8-4	4	8
VG-682-SS-8-5	VG-682-PL-8-5	5	8
VG-682-SS-8-6	VG-682-PL-8-6	6	8
VG-682-SS-8-7	VG-682-PL-8-7	7	8
VG-682-SS-8-8	VG-682-PL-8-8	8	8
VG-682-SS-8-10	VG-682-PL-8-10	10	8
VG-682-SS-10-2	VG-682-PL-10-2	2	10
VG-682-SS-10-3	VG-682-PL-10-3	3	10
VG-682-SS-10-4	VG-682-PL-10-4	4	10
VG-682-SS-10-5	VG-682-PL-10-5	5	10
VG-682-SS-10-6	VG-682-PL-10-6	6	10
VG-682-SS-10-7	VG-682-PL-10-7	7	10
VG-682-SS-10-8	VG-682-PL-10-8	8	10
VG-682-SS-10-10	VG-682-PL-10-10	10	10