

10 ga.  
steel channel  
(.130)

3/8 carriage  
bolt



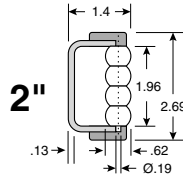
# 684

## BeadWall

Low friction guiding surface with high density bead pattern. Excellent for combiner or accumulation areas. Operating temperature range: -4°F to +170°F.

**Material:** 10 ga. steel channel, polyamide pin rails, stainless steel pins, acetal beads.

Stainless Channel	Plated Channel	Length (ft.)	Height (in.)
VG-684-SS-2-02	VG-684-PL-2-02	2	2
VG-684-SS-2-03	VG-684-PL-2-03	3	2
VG-684-SS-2-04	VG-684-PL-2-04	4	2
VG-684-SS-2-05	VG-684-PL-2-05	5	2
VG-684-SS-2-06	VG-684-PL-2-06	6	2
VG-684-SS-2-07	VG-684-PL-2-07	7	2
VG-684-SS-2-08	VG-684-PL-2-08	8	2
VG-684-SS-2-10	VG-684-PL-2-10	10	2



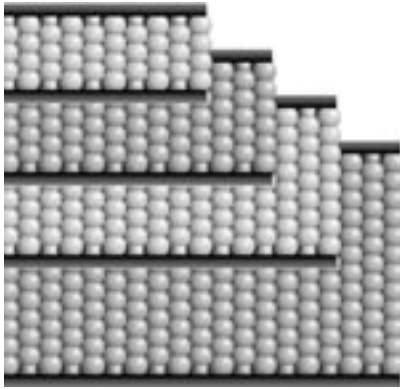
2"

VG-684-SS-2  
VG-684-PL-2

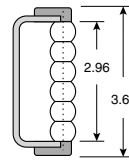
VG-684-SS-3  
VG-684-PL-3

VG-684-SS-4  
VG-684-PL-4

VG-684-SS-6  
VG-684-PL-6

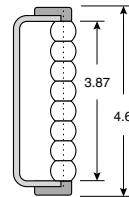


3"



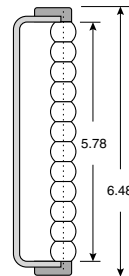
VG-684-SS-3-02	VG-684-PL-3-02	2	3
VG-684-SS-3-03	VG-684-PL-3-03	3	3
VG-684-SS-3-04	VG-684-PL-3-04	4	3
VG-684-SS-3-05	VG-684-PL-3-05	5	3
VG-684-SS-3-06	VG-684-PL-3-06	6	3
VG-684-SS-3-07	VG-684-PL-3-07	7	3
VG-684-SS-3-08	VG-684-PL-3-08	8	3
VG-684-SS-3-10	VG-684-PL-3-10	10	3

4"

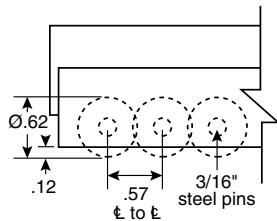


VG-684-SS-4-02	VG-684-PL-4-02	2	4
VG-684-SS-4-03	VG-684-PL-4-03	3	4
VG-684-SS-4-04	VG-684-PL-4-04	4	4
VG-684-SS-4-05	VG-684-PL-4-05	5	4
VG-684-SS-4-06	VG-684-PL-4-06	6	4
VG-684-SS-4-07	VG-684-PL-4-07	7	4
VG-684-SS-4-08	VG-684-PL-4-08	8	4
VG-684-SS-4-10	VG-684-PL-4-10	10	4

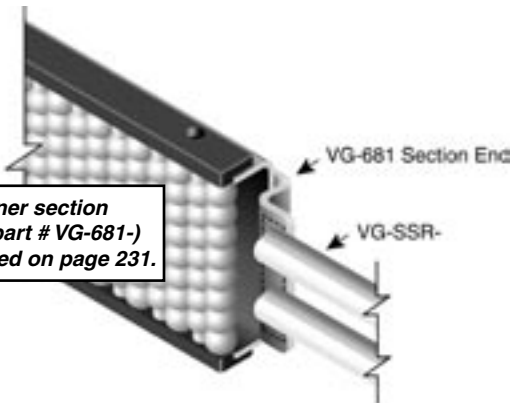
6"



VG-684-SS-6-02	VG-684-PL-6-02	2	6
VG-684-SS-6-03	VG-684-PL-6-03	3	6
VG-684-SS-6-04	VG-684-PL-6-04	4	6
VG-684-SS-6-05	VG-684-PL-6-05	5	6
VG-684-SS-6-06	VG-684-PL-6-06	6	6
VG-684-SS-6-07	VG-684-PL-6-07	7	6
VG-684-SS-6-08	VG-684-PL-6-08	8	6
VG-684-SS-6-10	VG-684-PL-6-10	10	6



Combiner section ends (part # VG-681-) are listed on page 231.



18"  
min. bending radius in either direction. See pg. 234 for custom bend request form.

Bead and Roller Guides