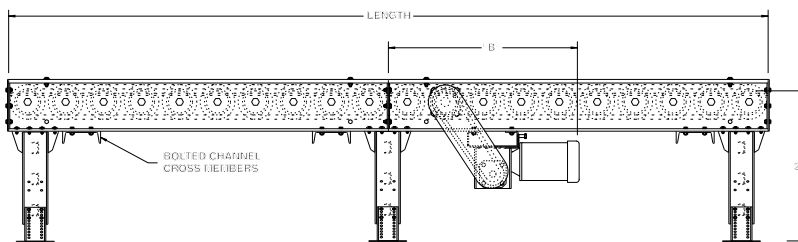
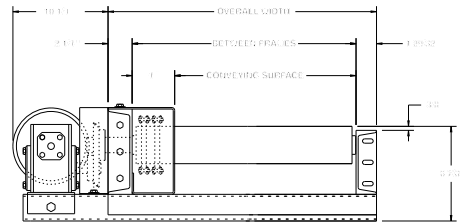
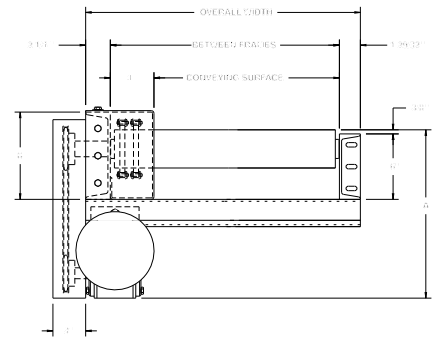


# MODEL 3530CDLR HEAVY DUTY CHAIN DRIVEN LIVE ROLLER



Roach model 3530CDLR is ideal for transporting very heavy unit loads. This heavy duty chain driven live roller is designed with heavy .300 wall steel rollers, larger size roller chain and heavy duty structural frame and supports for applications demanding ultra-durable construction for longevity and durability.



HP @ 35 FPM	REDUCER	"A"	"B" MAX.
3/4	RBW13340-02	15-1/2"	38-13/16"
1	RBW13150-01	17-1/8"	39-1/8"
1-1/2	RBW13150-02	17-1/2"	39-1/8"
2, 3	RBW13200-02	18-1/2"	40-13/16"
5	RBW13500	18-1/2"	41-13/16"

## SPECIFICATIONS

**TREAD ROLLERS:** 3-1/2" dia. x .300 wall steel, model 3530S with sprockets.

**CHAIN GUARD:** The chain drive is completely enclosed along the entire length of the conveyor.

**CENTER DRIVE:** Reversible drive either side mounted or underneath mounted (specify). Main drive roller is supported by precision, heavy duty, lubricated, ball bearing units.

**BEARINGS:** Removable type, heavy duty ball bearings, zinc plated, grease packed, labyrinth sealed.

**BED LENGTHS (6" RC, #60 CHAIN AND 12" RC, #80 CHAIN):** Intermediate bed section lengths 3'-0", 4'-0", 5'-0", 6'-0", 7'-0", 8'-0", 9'-0" and 10'-0" increments. Minimum overall conveyor length with drive 5'-0". Maximum overall conveyor length 80'-0".

**BED LENGTHS (7-1/2" RC, #80 CHAIN):** Intermediate bed section lengths 3'-1-1/2", 3'-9", 4'-4-1/2", 5'-0", 5'-7-1/2", 6'-3", 6'-10-1/2", 7'-6", 8'-1-1/2", 8'-9", 9'-4-1/2" and 10'-0". Minimum overall conveyor length with drive 5'-0". Maximum overall conveyor length 80'-0".

**ROLLER CENTERS:** 6" with No. 60 chain; 7-1/2" and 12" with No. 80 chain.

**CHAIN DRIVE:** Roller to roller with No. 60 or No. 80 roller chain.

**SPEED:** 35 FPM constant.

**BED:** 6" at 8.2 lbs. and 8" at 11.5 lbs. structural steel frame. Bed sections attached with couplings and floor supports.

**MOTOR DRIVE:** 3/4 HP, 230/460/3, 60 cycle, ODP right angle gear motor.

**ROLLER CAPACITY:** 2500 lbs. per roller.

**FLOOR SUPPORTS:** Model SS3530-3 structural supports adjustable 19-1/4" to 24-1/2" TOR. Supports provided on 5' centers and should be lagged to floor.

**ELECTRICAL CONTROLS:** Optional.



**SPECIFICATION TABLE**

CONVEYOR LENGTH				10'-0"	20'-0"	30'-0"	40'-0"	50'-0"	60'-0"	70'-0"	80'-0"
CONV. SURFACE	BF	RC	CHAIN SIZE	Unit weights (lbs.)							
35"	39"	6"	60	1616	3036	4456	5876	7296	8716	10136	11556
		7-1/2"	80	1632	3245	4858	6471	8084	9694	11310	12923
		12"	80	1163	2123	3083	4043	5003	5963	6923	7883
41"	45"	6"	60	1777	3351	4925	6499	8073	9647	11221	12795
		7-1/2"	80	1778	3471	5164	6857	8550	10241	11936	13629
		12"	80	1254	2284	3314	4344	5374	6404	7434	8464
47"	51"	6"	60	1938	3666	5394	7122	8850	10578	12306	14034
		7-1/2"	80	1924	3697	5470	7243	9016	10788	12562	14335
		12"	80	1345	2455	3565	4675	5785	6895	8005	9115
53"	57"	6"	60	2099	3981	5863	7745	9627	11509	13391	15273
		7-1/2"	80	2070	3923	5776	7629	9482	11335	13188	15041
		12"	80	1436	2616	3796	4976	6156	7336	8516	9656
59"	63"	6"	60	2260	4296	6332	8368	10404	12440	14476	16512
		7-1/2"	80	2216	4149	6082	8015	9948	11881	13814	15747
		12"	80	1527	2787	4047	5307	6567	7827	9087	10347

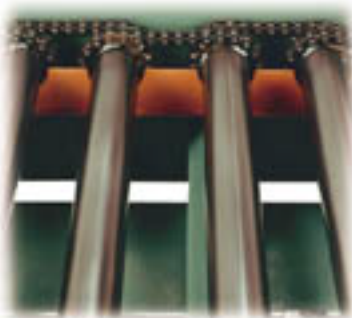
**OPTIONAL EQUIPMENT**

**SPEED:** Constant speed 1.5-100 FPM; DC variable speed; AC inverter variable speed. Other constant or variable speeds available. **NOTE: CAPACITY CHANGES WITH SPEED. 100 FPM MAX. WITH ROLL-TO-ROLL CHAIN DRIVE.**

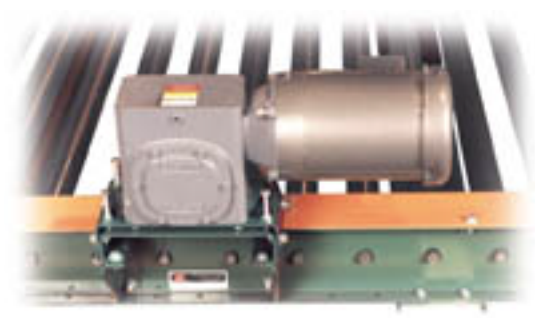
**FLOOR SUPPORTS:** Other height supports and knee braces available. See pages 152-156.

**ELECTRICAL CONTROLS:** Magnetic starter (one direction or reversible); one direction manual starter; momentary start/stop push button station; forward/reversing/stop push button station; mounting and pre-wiring for units 12'-0" long and under; limit switch, photo relay; others available.

**MOTORS:** Available through 5 HP in TEFC, explosion proof, dirty duty, brake motor, 115/230/1, 575/3, etc.



**ROLLER TO ROLLER CHAIN DRIVE**  
(guard removed for clarity)



**OPTIONAL TOP ROLLER GUARD MOUNTED DRIVE**