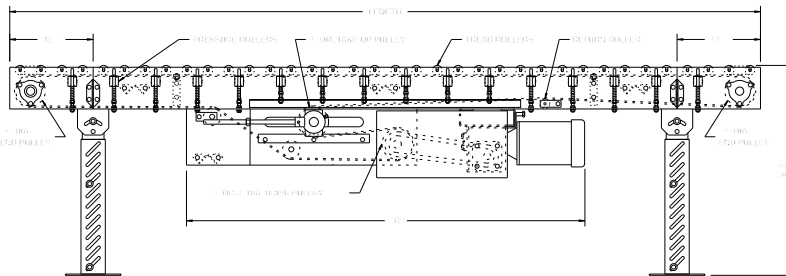
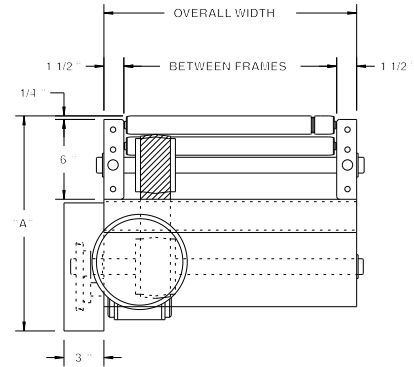




138VP accumulates goods safely and with minimum back pressure. Reversible, it can transport loads up to 100 lbs./ft. with as little as 2-1/2% back pressure. Ideally, packages of uniform weight can be accumulated temporarily using pneumatic package stops.



HP @ 60 FPM	REDUCER	"A"	"B" MAX.
1/3	RBW13120-02	16-1/16"	54-7/32"
1/2	RBW13120-02	16-1/16"	54-7/32"
3/4	RBW13340-02	16-15/32"	55-1/16"
1	RBW13150-01	18-3/16"	55-1/8"
1-1/2	RBW13150-02	18-3/16"	55-1/8"
2, 3	RBW13200-02	19"	57-5/16"

SPECIFICATIONS

TREAD ROLLERS: 1-3/8" dia. x 18 ga. galvanized steel, model 138G with 5/16" hex.

PRESSURE ROLLERS: 1-3/8" dia. x 18 ga. galvanized steel, model 138G with 5/16" hex.

RETURN ROLLERS: 1-3/8" dia. x 18 ga. galvanized steel, model 138G w/ 5/16" hex, adjustable.

BELTING: 2-1/4" wide "high strength" PVC-150 belt.

CENTER DRIVE: Reversible drive with 24" integral belt take-up.

DRIVE PULLEY: 4" dia. with 1-3/16" dia. shaft or 8" dia. with 1-7/16" dia. shaft, both crowned and fully lagged.

SPEED: 60 FPM, constant.

END PULLEY: 4" dia., crowned, with 1-3/16" dia. shaft.

BEARINGS: All pulley bearings are precision, heavy duty, lubricated, ball bearing units with cast iron housings.

BED: 6" x 1-1/2" x 12 ga. channel frame slotted for tread rollers to pop-out. When unit is installed at 7'-0" elevation or higher, rollers must be retained in conveyor frame. Specify desired elevation. Bed sections attached with couplings and floor supports.

SQUARING RODS: Adjustable rods on **underside of bed allow frame to be squared** for improved belt tracking and are standard on all units over 30'.

FLOOR SUPPORTS: SM-6 adjustable 30-1/2" to 42-1/2" TOR. Supports should be lagged to floor.

MOTOR DRIVE: 1/3 HP, 230/460/3, 60 cycle, ODP right angle gear motor.

ROLLER CHAIN: Drive pulley is driven by No. 50 roller chain for 1-1/2 HP or less and No. 60 chain on larger drives. Chain take-up provided on motor base.

ELECTRICAL CONTROLS: Optional.



WARNING

Pop-out rollers should be retained in frame if unit is elevated to 7'-0" and above.