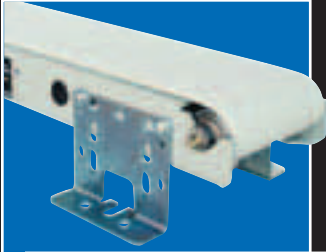
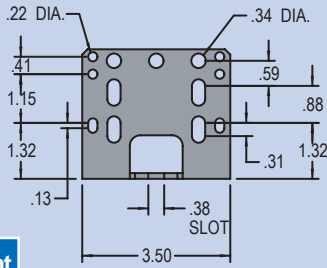


Standard Mounts



Universal Adjustable Side Mount

125-0181-04 pictured



Notes:

Brackets are universal and can work on either side of the conveyor. Frame mounted brackets can only be used with 1" high or lower cleats. Tee Slot mounted brackets can only be used with 1/2" high or lower cleats.

To Order:

Frame Mounted version attaches directly to the conveyor frame. The frame has mounting holes every 3".

The Tee Slot mounted version attaches to 1" side rails, 2" side rails, the single tee slot and the multi tee slot. See page 22 & 24.

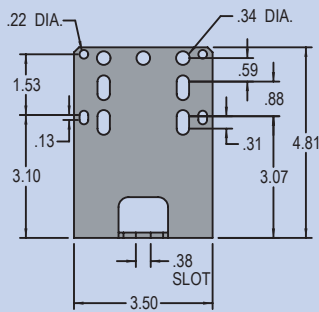
Part No. 125-0181-01 (Tee Slot)*
Part No. 125-0181-04 (Frame)*
Part No. 125-0181-05 (For use with multi-tier stand)*

*Part No. denotes one bracket and necessary hardware



Universal Raised Side Mount

125-0182-04 pictured



Notes:

Brackets are universal and can work on either side of the conveyor. Universal raised side mounts work with all cleat heights.

To Order:

Frame Mounted version attaches directly to the conveyor frame. The frame has mounting holes every 3".

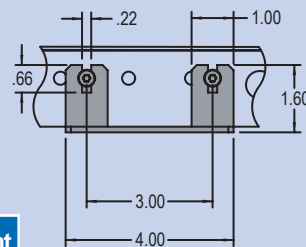
The Tee Slot mounted version attaches to 1" side rails, 2" side rails, the single tee slot and the multi tee slot. See page 22 & 24.

Part No. 125-0182-01 (Tee Slot)*
Part No. 125-0182-04 (Frame)*

*Part No. denotes one bracket and necessary hardware



Tee Mount



Notes:

Brackets are universal and can work on either side of the conveyor. Can also be used at tail end of conveyor in conjunction with drive end mounts (125-0014-00, 125-0013-00, and 125-0015-00). Cannot be used with cleated belts.

To Order:

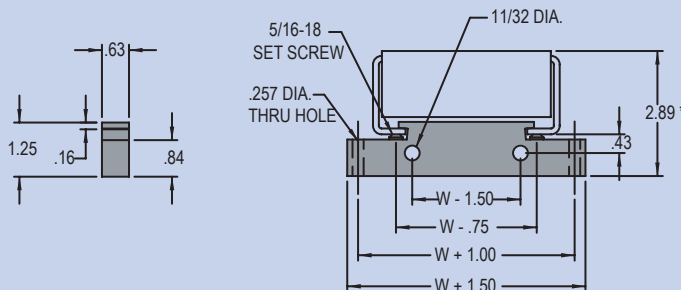
Attaches directly to the conveyor frame. The frame has mounting holes every 3".

Part No. 125-0010-00*

*Part No. denotes one bracket and necessary hardware



Universal Bottom Mount



Notes:

Bottom mount can attach conveyor to a horizontal or vertical surface. Cannot be used with high adhesion or cleated belts.

To Order:

Attaches directly to the underside of the conveyor frame. To order, use the part number below and fill in the nominal conveyor width in inches for the last two digits.

Part No. 125-0011-WW *

Example: 125-0011-04*
Universal Bottom mount for a 4" wide conveyor

*Part No. denotes one bracket and necessary hardware